

A close-up, high-angle photograph of a Goodman furnace burner assembly. The burner is a circular metal plate with a complex, multi-lobed shape. It is surrounded by a dense array of vertical, cylindrical burners that are glowing with a bright red-orange light, indicating they are turned on. The background is dark, making the glowing burners stand out prominently. The Goodman logo is overlaid on the right side of the image.

Goodman[®]

PRODUCTS
CATALOG



Air Conditioning & Heating

PRODUCTS CATALOG

SPLIT SYSTEM AIR CONDITIONERS

DSXC18	up to 18 SEER	2
DSXC16	up to 16 SEER	3
SSX16	up to 16 SEER	4
SSX14	up to 15 SEER	5
GSX13	13 SEER	6

SPLIT SYSTEM HEAT PUMPS

DSZC18	up to 18 SEER	7
DSZC16	up to 16 SEER	8
SSZ16	up to 16 SEER	9
SSZ14	up to 15 SEER	10
GSZ13	13 SEER	11

MINI-SPLIT SYSTEMS

GMSG	13 SEER/7.7 HSPF	12
------	------------------	----

GAS FURNACES

GMVC95	up to 95% AFUE	13
GVCV9/95	up to 95% AFUE	14
GMH95	up to 95% AFUE	15
GCH9/95	up to 95% AFUE	16
GKS9	up to 92.1% AFUE	17
GMVC8	80% AFUE	18
GME8	80% AFUE	19
GMH8	80% AFUE	20
GDH8	80% AFUE	21
GMS8	80% AFUE	22
GDS8	80% AFUE	23
GHS8	80% AFUE	24

PACKAGED UNITS

Air Conditioners

GPC15M	up to 15 SEER	25
GPC14H	up to 14 SEER	26
GPC13M	13 SEER	27
GPC13H	13 SEER	28

Heat Pumps

GPH15M	up to 15 SEER	29
GPH14H	up to 14 SEER	30
GPH13M	13 SEER	31
GPH13H	13 SEER	32

PACKAGED UNITS (CONT.)

Gas/Electric Units

GPG15	up to 15 SEER/80% AFUE	33
GPG13M	13 SEER/80% AFUE	34

AIR HANDLERS

AEPF	35	ARUF	39
ASPF	36	MBVC/MBR	40
ARPF	37	AWUF	41
ADPF	38	ACNF	42

COILS

CAUF	43	CHPF	45
CAPF	44	CSCF	46

INDOOR AIR QUALITY

DMH900	47	GRAM/GBB	51
GHEPA	48	UVX	52
GDMHEPA	48	G1EAC	53
GGM/GSASD	49	HRV/ERV	54
G13MU/GMU	50	HUM	55

CONTROLS

ComfortNet Communicating Control	56
Touch-Screen Thermostats	57
Standard Thermostats and Accessories	58

QUIETFLEX® – FLEX DUCT

AMGFlex™ Duct/ HPDFlex™ Duct	59
“Rip-Stop” Silver Jacket/ UV-Inhibited Black Jacket	60
Mobile Home-Approved/ Collared Silver Jacket	61
Insulated Sleeve/ Metallic Uninsulated Connector	62
Clothes Dryer Transition Duct	63
Acoustic Baffles & Banners	63
Textile Duct Liner/Duct Wrap	64

ACCESSORIES

Split System Air Conditioners & Heat Pumps	65
Gas Furnaces	66
GPC13/14H and GPH13/14H Packaged Units	67
GPC13/14M and GPH13/14M Packaged Units	67
GPG13 & GPG15 Packaged Units	68
Air Handlers	68



Goodman Manufacturing Company, L.P., reserves the right to discontinue, or change at any time, specifications or designs without notice or without incurring obligations. Quietflex® is a registered trademark of Quietflex Manufacturing Company, L.P.
© 2010 Goodman Manufacturing Company, L.P., Houston, Texas • Printed in the USA.



SPLIT SYSTEM AIR CONDITIONERS

DSXC18 — UP TO 18 SEER

The Goodman® brand DSXC18 Air Conditioner uses the chlorine-free refrigerant R-410A and is part of our new ComfortNet™ family of communicating units. In addition, the DSXC18 features energy efficiencies and operating sound levels that are among the best in the heating and cooling industry. This unit contains the two-stage, high-efficiency Copeland® scroll compressor, which provides improved temperature and humidity control for the consumer who desires superb comfort and quiet operation.

Standard Features

- R-410A chlorine-free refrigerant
- ComfortNet™ Communication System compatible
- Two-Stage Copeland UltraTech scroll compressor
- High-density foam compressor sound blanket
- Expanded ComfortAlert diagnostics built in
- Set-up capable with 2 low-voltage wires to outdoor unit
- Diagnostic indicator lights and storage of 6 fault codes
- Color-coded terminal strip for non-communicating set-up
- High- and low-pressure switches
- Fully charged for 15' of tubing length
- Factory-installed filter dryer
- Coil and ambient temperature sensors
- Two-speed super quiet condenser fan motor
- Sweat connection service valves with easy access to gauge ports
- AHRI Certified; ETL Listed
- Goodman brand sound control top design
- Wire fan discharge grille and steel louver coil guard
- Baked-on powder-paint finish
- Rust-resistant coated screws
- Compact footprint
- Top and side maintenance access
- Single-panel access to controls with space provided for field-installed accessories
- When properly anchored, meets the 2001 Florida Building Code unit integrity requirements for hurricane-type winds (Anchor bracket kits available.)



* Complete warranty details available from your dealer or at www.goodmanmfg.com. To receive the Lifetime Compressor Limited Warranty (good for as long as you own your home), 10-Year Unit Replacement Limited Warranty, and 10-Year Parts Limited Warranty, online registration must be completed within 60 days of installation. Online registration is not required in California or Quebec.



ENERGY STAR ratings are dependent upon conditions beyond equipment installation. To make certain your HVAC equipment qualifies for the ENERGY STAR designation get complete information at www.energystar.gov.

MODEL	NOMINAL COOLING (TONS)	VOLTAGE-PHASE-Hz	DIMENSIONS			SERVICE VALVE		DBS	SHIP WEIGHT (LBS)
			W"	D"	H"	LIQUID	SUCTION		
DSXC180361A	3	208/230-1-60	35½"	35½"	38½"	¾"	¾"	71	270
DSXC180481A	4	208-230/1 /60	35½"	35½"	38½"	¾"	¾"	72	320
DSXC180601A	5	208-230/1 /60	35½"	35½"	38½"	¾"	¾"	74	330

Goodman Manufacturing Company, L.P., reserves the right to discontinue or change at any time specifications or designs without notice or without incurring obligations.

DSXC16 — UP TO 16 SEER

The Goodman® brand DSXC16 Air Conditioner uses the chlorine-free refrigerant R-410A and is part of our new ComfortNet™ family of communicating units. In addition, the DSXC16 features energy efficiencies and operating sound levels that are among the best in the heating and cooling industry. This unit contains the two-stage, high-efficiency Copeland® scroll compressor, which provides improved temperature and humidity control for the consumer who desires superb comfort and quiet operation.



* Complete warranty details available from your dealer or at www.goodmanmfg.com. To receive the Lifetime Compressor Limited Warranty (good for as long as you own your home), 10-Year Unit Replacement Limited Warranty, and 10-Year Parts Limited Warranty, online registration must be completed within 60 days of installation. Online registration is not required in California or Quebec.



ENERGY STAR ratings are dependent upon conditions beyond equipment installation. To make certain your HVAC equipment qualifies for the ENERGY STAR designation get complete information at www.energystar.gov.

Product Features

- R-410A chlorine-free refrigerant
- ComfortNet™ Communication System compatible
- Two-Stage Copeland UltraTech scroll compressor
- High-density foam compressor sound blanket
- Expanded ComfortAlert diagnostics built in
- Set-up capable with 2 low-voltage wires to outdoor unit
- Diagnostic indicator lights and storage of 6 fault codes
- Color-coded terminal strip for non-communicating set-up
- High- and low-pressure switches
- Fully charged for 15' of tubing length
- Factory-installed filter dryer
- Coil and ambient temperature sensors
- Two-speed super quiet condenser fan motor
- Sweat connection service valves with easy access to gauge ports
- AHRI Certified; ETL Listed
- Wire fan discharge grille
- Steel louver coil guard
- Baked-on powder paint finish
- Rust-resistant coated screws
- Compact footprint
- Top and side maintenance access
- Single-panel access to controls with space provided for field-installed accessories
- When properly anchored, meets 2001 Florida Building Code unit integrity requirements for hurricane-type winds (Anchor bracket kits available.)



MODEL	COOLING CAPACITY (TONS)	VOLTAGE-PHASE	DIMENSIONS			SERVICE VALVE		DBS	SHIP WEIGHT (LBS)
			W"	D"	H"	LIQUID	SUCTION		
DSXC160241A	2	208/230-60-1	29	29	38¼	⅜"	¼"	71	282
DSXC160361A	3	208/230-60-1	29	29	38¼	⅜"	¼"	71	282
DSXC160481A	4	208/230-60-1	35½	35½	38¼	⅜"	⅞"	74	282
DSXC160601A	5	208/230-60-1	35½	35½	38¼	⅜"	⅞"	75	296
DSXC160601B	5	208/230-60-1	35½	35½	38¼	⅜"	⅞"	75	296

Goodman Manufacturing Company, L.P., reserves the right to discontinue or change at any time specifications or designs without notice or without incurring obligations.

SPLIT SYSTEM AIR CONDITIONERS

SSX16 — UP TO 16 SEER

The Goodman® brand SSX16 Air Conditioner uses R-410A chlorine-free refrigerant and features energy efficiencies and operating sound levels that are among the best in the heating and cooling industry. The SSX16 features a high-efficiency Copeland® scroll compressor and is designed for the consumer who desires superior comfort, quiet operation, and performance.

Product Features

- R-410A chlorine-free refrigerant
- High-efficiency Copeland scroll compressor
- High-quality compressor sound cover
- High- and low-pressure switches
- Factory-installed filter dryer
- 850 RPM condenser fan motor
- Copper tube/enhanced aluminum fin coil
- Sweat connection service valves with easy access to gauge ports
- Contactor with lug connection
- Ground lug connection
- AHRI Certified; ETL Listed
- Goodman brand sound control top design
- Steel louver coil guard
- Heavy-gauge galvanized-steel cabinet
- Attractive Architectural Gray powder-paint finish with 500-hour salt-spray approval
- Top and side compressor and tubing access
- Single-panel access to controls with space provided for field-installed accessories
- When properly anchored, meets the 2001 Florida Building Code unit integrity requirements for hurricane-type winds (Anchor bracket kits available.)



* Complete warranty details available from you local dealer or at www.goodmanmfg.com. To receive the Lifetime Compressor Limited Warranty (good for as long as you own your home) and 10-Year Parts Limited Warranty, online registration must be completed within 60 days of installation. Online registration is not required in California or Quebec.



ENERGY STAR ratings are dependent upon conditions beyond equipment installation. To make certain your HVAC equipment qualifies for the ENERGY STAR designation get complete information at www.energystar.gov.

MODEL	NOMINAL COOLING (TONS)	VOLTAGE PHASE	DIMENSIONS			SERVICE VALVE		DBS	SHIP WEIGHT (LBS)
			W"	D"	H"	LIQUID	SUCTION		
SSX160241A*	2	208/230-1	29	29	38%	3/8"	3/4"	73.5	282
SSX160241B*	2	208/230-1	29	29	32%	3/8"	3/4"	73.5	173
SSX160301A*	2.5	208/230-1	29	29	32%	3/8"	3/4"	73.5	174
SSX160361A*	3	208/230-1	29	29	38%	3/8"	3/4"	73.5	282
SSX160361B*	3	208/230-1	29	29	32%	3/8"	3/4"	73.5	182
SSX160421A*	3.5	208/230-1	29	29	36%	3/8"	7/8"	75.0	185
SSX160481A*	4	208/230-1	35½	35½	38%	3/8"	7/8"	73.5	282
SSX160591A*	5	208/230-1	35½	35½	38%	3/8"	7/8"	73.5	287
SSX160601A*	5	208/230-1	35½	35½	38%	3/8"	7/8"	73.5	296
SSX160601B*	5	208/230-1	35½	35½	38%	3/8"	7/8"	73.5	296

Goodman Manufacturing Company, L.P., reserves the right to discontinue, or change at any time, specifications or designs without notice or without incurring obligations.

SSX14 — UP TO 15 SEER

The Goodman® brand SSX14 Air Conditioner uses R-410A chlorine-free refrigerant and features operating sound levels that are among the best in the heating and cooling industry. The SSX14 features a high-efficiency Copeland® scroll compressor and is designed for the consumer who desires superior comfort, quiet operation, and performance.



Product Features

- R-410A chlorine-free refrigerant
- High-efficiency Copeland scroll compressor
- High-quality compressor sound cover
- High- and low-pressure switches
- Factory-installed filter dryer
- 850 RPM condenser fan motor
- Copper tube/enhanced aluminum fin coil
- Service valves with sweat connections and easy-access gauge ports
- Contactor with lug connection
- Ground lug connection
- AHRI Certified; ETL Listed
- Goodman brand sound control top design
- Steel louver coil guard
- Heavy-gauge galvanized-steel cabinet
- Attractive Architectural Gray powder-paint finish with 500-hour salt-spray approval
- Top and side maintenance access
- Single-panel access to controls with space provided for field-installed accessories
- When properly anchored, meets the 2001 Florida Building Code unit integrity requirements for hurricane-type winds (Anchor bracket kits available.)

* Complete warranty details available from your local dealer or at www.goodmanmfg.com. To receive the Lifetime Compressor Limited Warranty (good for as long as you own your home) and 10-Year Parts Limited Warranty, online registration must be completed within 60 days of installation. Online registration is not required in California or Quebec.



ENERGY STAR ratings are dependent upon conditions beyond equipment installation. To make certain your HVAC equipment qualifies for the ENERGY STAR designation get complete information at www.energystar.gov.

MODEL	NOMINAL COOLING (TONS)	VOLTAGE-PHASE	DIMENSIONS			SERVICE VALVE		DBS	SHIP WEIGHT (LBS)
			W"	D"	H"	LIQUID	SUCTION		
SSX140181B	1½	208/230-1	26	26	27½	¾"	¾"	71	146
SSX140241B	2	208/230-1	26	26	32½	¾"	¾"	71	156
SSX140301B	2½	208/230-1	29	29	32½	¾"	¾"	72	172
SSX140361A	3	208/230-1	29	29	34¼	¾"	¾"	73	199
SSX140361B	3	208/230-1	29	29	32½	¾"	¾"	73	172
SSX140421B	3½	208/230-1	29	29	38¼	¾"	¾"	73	207
SSX140421C	3½	208/230-1	29	29	36	¾"	¾"	73	184
SSX140481A	4	208/230-1	35½	35½	38¼	¾"	¾"	74	242
SSX140601A	5	208/230-1	35½	35½	38¼	¾"	¾"	75	280

Goodman Manufacturing Company, L.P., reserves the right to discontinue or change at any time specifications or designs without notice or without incurring obligations.

SPLIT SYSTEM AIR CONDITIONERS

GSX13 — 13 SEER

The Goodman® brand GSX13 Energy-Efficient Air Conditioner uses R-410A chlorine-free refrigerant and features the Goodman brand sound control top design for quiet operation. In addition, the unit has an attractive louvered metal guard that protects the coil from damage plus a powder-paint finish that provides premium durability and improved UV protection.

Product Features

- R-410A chlorine-free refrigerant
- Energy-efficient scroll compressor
- Factory-installed liquid line filter dryer
- Copper tube/aluminum fin coil
- Brass liquid and suction line service valves
- Contactor with lug connection
- Ground lug connection
- AHRI Certified; ETL Listed
- Goodman brand sound control top design
- Steel louver coil guard
- Heavy-gauge galvanized-steel cabinet
- Attractive Architectural Gray powder-paint finish with 500-hour salt-spray approval
- When properly anchored, meets the 2001 Florida Building Code unit integrity requirements for hurricane-type winds (Anchor bracket kits available.)



* Complete warranty details available from your local dealer or at www.goodmanmfg.com. To receive the 10-Year Parts Limited Warranty, online registration must be completed within 60 days of installation. Online registration is not required in California or Quebec.

MODEL	NOMINAL COOLING (TONS)	VOLTAGE-PHASE	DIMENSIONS			SERVICE VALVE		DBS	SHIP WEIGHT (LBS)
			W"	D"	H"	LIQUID	SUCTION		
GSX130181B*	1½	208/230-1	26"	26"	27½"	⅜"	¼"	72	149
GSX130181C*	1½	208/230-1	26"	26"	27½"	⅜"	¼"	73	135
GSX130241B*	2	208/230-1	26"	26"	27½"	⅜"	¼"	72	151
GSX130301B*	2½	208/230-1	26"	26"	27½"	⅜"	¼"	73	152
GSX130361B*	3	208/230-1	29"	29"	28¾"	⅜"	⅝"	74	159
GSX130421B*	3½	208/230-1	29"	29"	36¼"	⅜"	⅝"	75	194
GSX130481B*	4	208/230-1	29"	29"	36¼"	⅜"	⅝"	76	195
GSX130601B*	5	208/230-1	29"	29"	40"	⅜"	⅝"	77	200

Goodman Manufacturing Company, L.P., reserves the right to discontinue or change at any time specifications or designs without notice or without incurring obligations.

DSZC18 — UP TO 18 SEER/UP TO 9.5 HSPF

The Goodman® brand DSZC18 Heat Pump uses the chlorine-free R-410A refrigerant and is part of our new ComfortNet™ family of communicating units. In addition, the DSZC18 contains the two-stage, high-efficiency Copeland® scroll compressor, which provides improved temperature and humidity control. This unit is designed for the consumer who desires superb comfort and quiet operation.



* Complete warranty details available from your dealer or at www.goodmanmfg.com. To receive the Lifetime Compressor Limited Warranty (good for as long as you own your home), 10-Year Unit Replacement Limited Warranty, and 10-Year Parts Limited Warranty, online registration must be completed within 60 days of installation. Online registration is not required in California or Quebec.



ENERGY STAR ratings are dependent upon conditions beyond equipment installation. To make certain your HVAC equipment qualifies for the ENERGY STAR designation get complete information at www.energystar.gov.

Product Features

- R-410A chlorine-free refrigerant
- ComfortNet™ Communication System compatible
- SmartShift™ Technology with short-cycle protection
- Two-Stage Copeland UltraTech scroll compressor
- High-density foam compressor sound blanket
- Expanded ComfortAlert diagnostics built in
- Set-up capable with 2 low-voltage wires to outdoor unit
- Diagnostic indicator lights and storage of 6 fault codes
- Color-coded terminal strip for non-communicating set-up
- High- and low-pressure switches
- Fully charged for 15' of tubing length
- Factory-installed filter dryer
- Coil and ambient temperature sensors
- Two-speed super quiet condenser fan motor
- Sweat connection service valves with easy access to gauge ports
- AHRI Certified; ETL Listed
- Goodman brand sound control top design
- Wire fan discharge grille
- Crankcase heater and suction line accumulator for compressor protection
- Steel louver coil guard
- Baked-on powder paint finish
- Rust-resistant coated screws
- Compact footprint
- Top and side maintenance access
- Single panel access to controls with space provided for field-installed accessories
- When properly anchored, meets the 2001 Florida Building Code unit integrity requirements for hurricane-type winds (Anchor bracket kits available.)



MODEL	CAPACITIES (TONS)		VOLTAGE-PHASE	DIMENSIONS			SERVICE VALVE		DBS	SHIP WEIGHT (LBS)
	COOLING	HEATING		W"	D"	H"	LIQUID	SUCTION		
DSZC180361A	3	3	208-230/1 /60	35½	35½	38¼	¾"	¾"	72	285
DSZC180481A	4	4	208-230/1 /60	35½	35½	38¼	¾"	1¼"	73	330
DSZC180601A	5	5	208-230/1 /60	35½	35½	38¼	¾"	1¼"	75	350
DSZC180601B	5	5	208-230/1 /60	35½	35½	38¼	¾"	1¼"	75	350

Goodman Manufacturing Company, L.P., reserves the right to discontinue, or change at any time, specifications or designs without notice or without incurring obligations.

SPLIT SYSTEM HEAT PUMPS

DSZC16 — UP TO 16 SEER/UP TO 9.5 HSPF

The Goodman® brand DSZC16 High-Efficiency Two-Stage Heat Pump uses R-410A chlorine-free refrigerant and features energy efficiencies and operating sound levels that are among the best in the heating and cooling industry. The DSZC16 features the two-stage, high-efficiency Copeland® scroll compressor, which provides improved temperature and humidity control. This unit is designed for the consumer who desires superior comfort, quiet operation, and performance.

Product Features

- R-410A chlorine-free refrigerant
- ComfortNet™ Communications System compatible
- SmartShift™ Technology with short-cycle protection
- Two-Stage Copeland® UltraTech scroll compressor
- High-density foam compressor sound blanket
- Expanded ComfortAlert diagnostics built in
- Set-up capable with 2 low-voltage wires to outdoor unit
- Diagnostic indicator lights and storage of 6 fault codes
- Color-coded terminal strip for non-communicating set-up
- High- and low-pressure switches
- Fully charged for 15' of tubing length
- Factory-installed filter dryer
- Coil and ambient temperature sensors
- Two-speed super quiet condenser fan motor
- Sweat connection service valves with easy access to gauge ports
- AHRI Certified; ETL Listed
- Wire fan discharge grille
- Crankcase heater and suction line accumulator for compressor protection
- Steel louver coil guard
- Baked-on powder paint finish
- Rust-resistant coated screws
- Compact footprint
- Top and side maintenance access
- Single-panel access to controls with space provided for field-installed accessories
- When properly anchored, meets the 2001 Florida Building Code unit integrity requirements for hurricane-type winds (Anchor bracket kits available.)



* Complete warranty details available from your dealer or at www.goodmanmfg.com. To receive the Lifetime Compressor Limited Warranty (good for as long as you own your home), 10-Year Unit Replacement Limited Warranty, and 10-Year Parts Limited Warranty, online registration must be completed within 60 days of installation. Online registration is not required in California or Quebec.



ENERGY STAR ratings are dependent upon conditions beyond equipment installation. To make certain your HVAC equipment qualifies for the ENERGY STAR designation get complete information at www.energystar.gov.

MODEL	CAPACITIES (TONS)		VOLTAGE-PHASE	DIMENSIONS			SERVICE VALVE		DBS	SHIP WEIGHT (LBS)
	COOLING	HEATING		W"	D"	H"	LIQUID	SUCTION		
DSZC160241A	2	2	208/230-1	29	29	38¼	¾"	¾"	72	282
DSZC160361A	3	3	208/230-1	35½	35½	38¼	¾"	¾"	73	282
DSZC160481A	4	4	208/230-1	35½	35½	38¼	¾"	¾"	74	282
DSZC160601A	5	5	208/230-1	35½	35½	38¼	¾"	¾"	75	296
DSZC160601B	5	5	208/230-1	35½	35½	38¼	¾"	¾"	75	296

Goodman Manufacturing Company, L.P., reserves the right to discontinue, or change at any time, specifications or designs without notice or without incurring obligations.

SSZ16 — UP TO 16 SEER/UP TO 9.5 HSPF

The Goodman® brand SSZ16 Heat Pump uses R-410A chlorine-free refrigerant and features a high-efficiency Copeland® scroll compressor. With energy efficiencies and operating sound levels that are among the best in the heating and cooling industry, the SSZ16 is designed for the consumer who desires superior comfort, quiet operation, and performance.



Product Features

- R-410A chlorine-free refrigerant
- SmartShift™ Technology with short-cycle protection
- High-efficiency Copeland scroll compressor
- High- and low-pressure switches
- High-quality compressor sound cover
- 850 RPM condenser fan motor
- Liquid refrigerant return protection
- Factory-installed, bi-flow liquid line filter dryer
- Service valves with sweat connections and gauge ports
- Copper tube/enhanced aluminum fin coil
- Reliable time-initiated, temperature-terminated defrost control
- AHRI Certified; ETL Listed
- Goodman brand sound control top design
- Steel louver coil guard
- Crankcase heater and suction line accumulator for compressor protection
- Heavy-gauge galvanized-steel cabinet
- Attractive Architectural Gray powder-paint finish with 500-hour salt-spray approval
- Top and side compressor and tubing access
- When properly anchored, meets the 2001 Florida Building Code unit integrity requirements for hurricane-type winds (Anchor bracket kits available.)

* Complete warranty details available from your local dealer or at www.goodmanmfg.com. To receive the Lifetime Compressor Limited Warranty (good for as long as you own your home) and 10-Year Parts Limited Warranty, online registration must be completed within 60 days of installation. Online registration is not required in California or Quebec.



ENERGY STAR ratings are dependent upon conditions beyond equipment installation. To make certain your HVAC equipment qualifies for the ENERGY STAR designation get complete information at www.energystar.gov.

MODEL	CAPACITIES (TONS)		VOLTAGE-PHASE	DIMENSIONS			SERVICE VALVE		DBS	SHIP WEIGHT (LBS)
	COOLING	HEATING		W"	D"	H"	LIQUID	SUCTION		
SSZ160241A	2	2	208/230-1	29	29	38¼	¾"	¾"	70	282
SSZ160361A	3	3	208/230-1	35½	35½	38¼	¾"	¾"	71	282
SSZ160481A	4	4	208/230-1	35½	35½	38¼	¾"	¾"	72	282
SSZ160601A	5	5	208/230-1	35½	35½	38¼	¾"	¾"	72	296
SSZ160601B	5	5	208/230-1	35½	35½	38¼	¾"	¾"	72	296

Goodman Manufacturing Company, L.P., reserves the right to discontinue, or change at any time, specifications or designs without notice or without incurring obligations.

SPLIT SYSTEM HEAT PUMPS

SSZ14 — UP TO 15 SEER/UP TO 8.5 HSPF

The Goodman® brand SSZ14 Heat Pump uses R-410A chlorine-free refrigerant and features operating sound levels that are among the best in the heating and cooling industry. The SSZ14 features a high-efficiency Copeland® scroll compressor and is designed for the consumer who desires superior comfort, quiet operation, and performance.

Product Features

- R-410A chlorine-free refrigerant
- SmartShift™ Technology with short-cycle protection
- High-efficiency Copeland scroll compressor
- High- and low-pressure switches
- High-quality compressor sound cover
- 850 RPM condenser fan motor
- Liquid refrigerant return protection
- Factory-installed, bi-flow liquid line filter dryer
- Service valves with sweat connections and gauge ports
- Copper tube/enhanced aluminum fin coil
- Reliable time-initiated, temperature-terminated defrost control
- Contactor with lug connection
- Ground lug connection
- AHRI Certified; ETL Listed
- Goodman brand sound control top design
- Steel louver coil guard
- Crankcase heater and suction line accumulator for compressor protection
- Heavy-gauge galvanized-steel cabinet
- Attractive Architectural Gray powder-paint finish with 500-hour salt-spray approval
- Top and side compressor and tubing access
- When properly anchored, meets the 2001 Florida Building Code unit integrity requirements for hurricane-type winds (Anchor bracket kits available.)



* Complete warranty details available from your local dealer or at www.goodmanmfg.com. To receive the Lifetime Compressor Limited Warranty (good for as long as you own your home) and 10-Year Parts Limited Warranty, online registration must be completed within 60 days of installation. Online registration is not required in California or Quebec.



ENERGY STAR ratings are dependent upon conditions beyond equipment installation. To make certain your HVAC equipment qualifies for the ENERGY STAR designation get complete information at www.energystar.gov.

MODEL	CAPACITIES (TONS)		VOLTAGE-PHASE	DIMENSIONS			SERVICE VALVE		DBS	SHIP WEIGHT (LBS)
	COOLING	HEATING		W"	D"	H"	LIQUID	SUCTION		
SSZ140181A	1½	1½	208/230-1	29	29	34¼	⅜"	¾"	70	199
SSZ140241A	2	2	208/230-1	29	29	38¼	⅜"	¾"	72	207
SSZ140301A	2½	2½	208/230-1	29	29	38¼	⅜"	¾"	72	219
SSZ140361A	3	3	208/230-1	35½	35¼	38¼	⅜"	⅞"	73	242
SSZ140421A	3½	3½	208/230-1	35½	35¼	38¼	⅜"	⅞"	73	242
SSZ140481A	4	4	208/230-1	35½	35¼	38¼	⅜"	⅞"	74	266
SSZ140601A	5	5	208/230-1	35½	35¼	38¼	⅜"	⅞"	75	280

Goodman Manufacturing Company, L.P., reserves the right to discontinue, or change at any time, specifications or designs without notice or without incurring obligations.

GSZ13 — 13 SEER/UP TO 7.8 HSPF

The Goodman® brand GSZ13 Energy-Efficient Heat Pump uses R-410A chlorine-free refrigerant and features the Goodman brand sound control top design for quiet operation. In addition, the unit has an attractive louvered metal guard that protects the coil from damage plus a powder-paint finish that provides premium durability and improved UV protection.



Product Features

- R-410A chlorine-free refrigerant charged for 15' of refrigerant line
- Energy-efficient scroll compressor
- Factory-installed liquid line filter dryer
- Copper tube/aluminum fin coil
- Brass liquid and suction line service valves
- Contactor with lug connection
- Ground lug connection
- AHRI Certified; ETL Listed
- Goodman brand sound control top design
- Steel louver coil guard
- Heavy-gauge galvanized-steel cabinet
- Attractive Architectural Gray powder-paint finish with 500-hour salt-spray approval
- When properly anchored, meets the 2001 Florida Building Code unit integrity requirements for hurricane-type winds (Anchor bracket kits available.)

* Complete warranty details available from you local dealer or at www.goodmanmfg.com. To receive the 10-Year Parts Limited Warranty, online registration must be completed within 60 days of installation. Online registration is not required in California or Quebec.

MODEL	CAPACITIES (TONS)		VOLTAGE-PHASE	DIMENSIONS			SERVICE VALVE		DBS	SHIP WEIGHT (LBS)
	COOLING	HEATING		W"	D"	H"	LIQUID	SUCTION		
GSZ130181A	1½	1½	208/230-1	26	26	32¼	¾"	¾"	71	198
GSZ130241A	2	2	208/230-1	26	26	32¼	¾"	¾"	73	198
GSZ130241B	2	2	208/230 - 1	26	26	32¼	¾"	¾"	73	162
GSZ130301A	2½	2½	208/230-1	26	26	32¼	¾"	¾"	72	202
GSZ130361A	3	3	208/230-1	29	29	38¼	¾"	¾"	74	232
GSZ130361B	3	3	208/230 - 1	29	29	32¼	¾"	¾"	74	182
GSZ130421A	3½	3½	208/230-1	29	29	38¼	¾"	¾"	74	235
GSZ130481A	4	4	208/230-1	29	29	34¼	¾"	¾"	76	240
GSZ130601A	5	5	208/230-1	35½	35½	34¼	¾"	¾"	75	266

Goodman Manufacturing Company, L.P., reserves the right to discontinue, or change at any time, specifications or designs without notice or without incurring obligations.

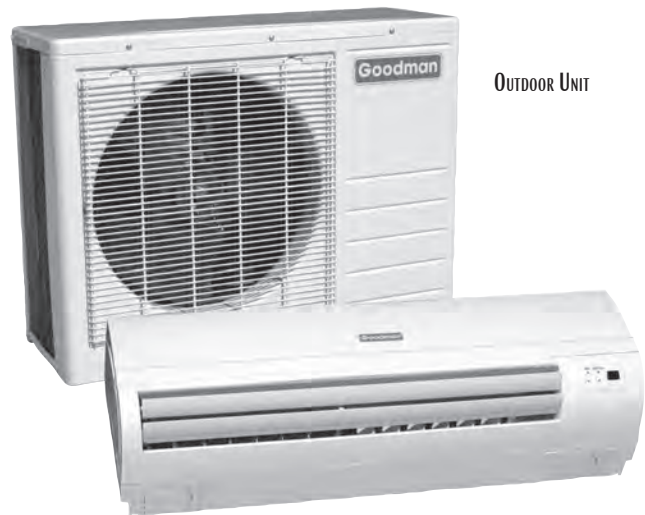
MINI-SPLIT SYSTEMS

GMSG — 13 SEER/7.7 HSPF

The Goodman® brand GMSG Ductless Mini-Split Air Conditioning and Heat Pump Systems work like a typical residential split air conditioning system, just without the need for duct work. With cost-effective installation, excellent cooling and heating comfort, and the convenience of remote control, the GMSG mini-splits are ideal for newly enclosed spaces (garages, porches, decks) or for the spot cooling of a sunny room.

Product Features

- Auto-Start
- Remote-Control
- Sleep Mode
- Bi-Directional Airflow
- Easy-Clean Front Panel
- Rust-Resistant Cabinet
- Rotary Compressor
- Trapiziform Inner-Groove Copper
- Self-Diagnostics
- Auto-Protection



OUTDOOR UNIT

INDOOR UNIT



* Full warranty details available at www.goodmanmfg.com.

MODEL	NOMINAL CAPACITIES				VOLTS/ PHASE-Hz	DIMENSIONS (IN.)		OUTDOOR DBS	SHIP WEIGHT (LBS)
	COOLING	HEATING	SEER	HSPF		INDOOR UNIT	OUTDOOR UNIT		
MSG-12CRN1	12,000		13		220-230/1-60	35.7 x 11.3 x 9.3	29.9 x 23.2 x 11.2	55	118.9
MSG-12HRN1	12,000	13,000	13	7.7	220-230/1-60	35.7 x 11.3 x 9.3	29.9 x 23.2 x 11.2	55	123.3
MSG-18CRN1	18,000		13		220-230/1-60	49.2 x 12.8 x 9.1	33.3 x 27.4 x 13.2	59	180.6
MSG-18HRN1	18,000	19,000	13	7.7	220-230/1-60	49.2 x 12.8 x 9.1	33.3 x 27.4 x 13.2	55	182.8
MSG-24CRN1	24,000		13		220-230/1-60	49.2 x 12.8 x 9.1	35.3 x 33.9 x 13	60	187.2
MSG-24HRN1	24,000	25,000	13	7.7	220-230/1-60	49.2 x 12.8 x 9.1	35.3 x 33.9 x 13	60	196.0

Goodman Manufacturing Company, L.P., reserves the right to discontinue, or change at any time, specifications or designs without notice or without incurring obligations.

GMVC95 — UP TO 95% AFUE

The Goodman® brand GMVC95 Two-Stage, Variable-Speed Gas Furnace features our aluminized-steel, dual-diameter tubular heat exchanger and durable Silicon Nitride Hot-Surface Ignition system. This furnace is run-tested for heating or combination heating/cooling applications.



Product Features

- Aluminized-steel, dual-diameter tubular heat exchanger
- ComfortNet™ Communication System compatible
- Two-stage gas valve operates with two-stage or single-stage thermostats
- Efficient and quiet variable-speed ECM circulator motor gently ramps up or down according to heating or cooling demand
- Durable 110V Silicon Nitride igniter
- Furnace control board with self-diagnostics, color-coded low-voltage terminals and provisions for electronic air cleaner and 120-volt or 24-volt humidifiers
- Control board stores the last six diagnostic codes in non-volatile memory; simple push-button activation outputs the fault history
- Low constant fan speed allows homeowner to activate low speed to efficiently circulate air throughout the home. This setting costs less than a 100-watt light bulb to operate.
- Dual-certified for sealed combustion direct vent (2-pipe) or non-direct vent (1-pipe) applications
- Auto-Comfort mode for enhanced dehumidification and energy savings during the cooling months
- Easy-to-install top venting is standard; alternate flue/vent located on right
- Quiet two-speed induced draft blower
- Fully insulated heavy-gauge steel cabinet with durable baked-enamel finish
- Foil-faced insulation lines the heat exchanger
- Designed for multi-position installation: upflow, horizontal left or right
- Airtight solid bottom for side-return applications and easy-cut tabs for effortless removal in bottom air-inlet applications
- Convenient left or right connection for gas and electric service
- Coil and furnace fit flush for most installations
- All models comply with California NOx emissions standards



* Complete warranty details available from your local dealer or at www.goodmanmfg.com. To receive the Lifetime Heat Exchanger Limited Warranty (good for as long as you own your home), 10-Year Unit Replacement Heat Exchanger Limited Warranty, and 10-Year Parts Limited Warranty, online registration must be completed within 60 days of installation. Online registration is not required in California or Quebec.



ENERGY STAR ratings are dependent upon conditions beyond equipment installation. To make certain your HVAC equipment qualifies for the ENERGY STAR designation get complete information at www.energystar.gov.

MODEL	HIGH FIRE (BTU/H)		LOW FIRE (BTU/H)		AFUE %	TONS A/C ¹	DIMENSIONS			SHIP WEIGHT (LBS)
	INPUT	OUTPUT	INPUT	OUTPUT			W"	D"	H"	
GMVC950453BX	46,000	45,000	32,000	30,800	95	1.5 - 3.0	17½	28¾"	40	121
GMVC950704CX	69,000	67,000	48,000	46,400	95	1.5 - 4.0	21	28¾"	40	145
GMVC950905CX	92,000	90,000	64,000	61,700	95	2.0 - 5.0	24½	28¾"	40	160
GMVC950905DX	92,000	90,000	64,000	61,700	95	2.0 - 5.0	24½	28¾"	40	160
GMVC951155DX	115,000	109,000	80,000	77,400	95	2.0 - 5.0	24½	28¾"	40	170

¹ Max tons @ 0.5" ESP

Goodman Manufacturing Company, L.P., reserves the right to discontinue, or change at any time, specifications or designs without notice or without incurring obligations.

GAS FURNACES

GCVC9 / GCVC95 — UP TO 95% AFUE

The Goodman® brand GCVC95 and GCVC9 Two-Stage, Variable-Speed Gas Furnaces feature our aluminized-steel, dual-diameter tubular heat exchanger and durable Silicon Nitride Hot-Surface Ignition system. These furnaces are run-tested for heating or combination heating/cooling applications.

Product Features

- Aluminized-steel, dual-diameter tubular heat exchanger
- ComfortNet™ Communication System compatible
- Two-stage gas valve operates with two-stage or single-stage thermostats
- Efficient and quiet variable-speed ECM circulator motor gently ramps up or down according to heating or cooling demand
- Durable 110V Silicon Nitride igniter
- Furnace control board with self-diagnostics, color-coded low-voltage terminals, and provisions for electronic air cleaner and 120-volt or 24-volt humidifiers
- Control board stores the last six diagnostic codes in non-volatile memory; simple push-button activation outputs the fault history
- Low, constant fan speed allows homeowner to activate low speed to efficiently circulate air throughout the home. This setting costs less than a 100-watt light bulb to operate.
- Dual-certified for sealed combustion direct vent (2-pipe) or non-direct vent (1-pipe) applications
- Auto-Comfort mode for enhanced dehumidification and energy savings during the cooling months
- Easy-to-install top venting is standard – optional side venting available
- Quiet two-speed induced draft blower
- Fully insulated heavy-gauge steel cabinet with durable baked-enamel finish
- Foil-faced insulation lines the heat exchanger
- Designed for multi-position installation: downflow, horizontal left or right
- Convenient left or right connection for gas and electric service
- Coil and furnace fit flush for most installations
- All models comply with California NOx emissions standards



* Complete warranty details available from your local dealer or at www.goodmanmfg.com. To receive the Lifetime Heat Exchanger Limited Warranty (good for as long as you own your home), 10-Year Unit Replacement Heat Exchanger Limited Warranty, and 10-Year Parts Limited Warranty, online registration must be completed within 60 days of installation. Online registration is not required in California or Quebec.



ENERGY STAR ratings are dependent upon conditions beyond equipment installation. To make certain your HVAC equipment qualifies for the ENERGY STAR designation get complete information at www.energystar.gov.

MODEL	HIGH FIRE (BTU/H)		LOW FIRE (BTU/H)		AFUE %	TONS A/C ¹	DIMENSIONS			SHIP WEIGHT (LBS)
	INPUT	OUTPUT	INPUT	OUTPUT			W"	D"	H"	
GCVC950714CX	69,000	65,000	48,000	45,000	95	1.5 - 4.0	21	28¾"	40	139
GCVC950915DX	92,000	87,000	64,000	60,000	95	2.0 - 5.0	21	28¾"	40	165
GCVC91155DX	115,000	109,000	80,000	77,400	93	2.0 - 5.0	24½	28¾"	40	160

¹ Max tons @ 0.5" ESP

Goodman Manufacturing Company, L.P., reserves the right to discontinue, or change at any time, specifications or designs without notice or without incurring obligations.

GMH95 — UP TO 95% AFUE

The Goodman® brand GMH95 (Convertible), Multi-Speed, Multi-Position Gas Furnace features our aluminized-steel tubular heat exchanger and durable Silicon Nitride Hot-Surface Ignition system. This furnace is run-tested for heating or combination heating/cooling applications.



* Complete warranty details available from your local dealer or at www.goodmanmfg.com. To receive the Lifetime Heat Exchanger Limited Warranty (good for as long as you own your home), 10-Year Unit Replacement Heat Exchanger Limited Warranty, and 10-Year Parts Limited Warranty, online registration must be completed within 60 days of installation. Online registration is not required in California or Quebec.



ENERGY STAR ratings are dependent upon conditions beyond equipment installation. To make certain your HVAC equipment qualifies for the ENERGY STAR designation get complete information at www.energystar.gov.

Product Features

- Aluminized-steel, dual-diameter tubular heat exchanger
- Two-stage gas valve with convertible technology that allows installer to activate two-stage operation with the flip of a dipswitch
- Durable 110V Silicon Nitride igniter
- Furnace control board with self-diagnostics, color-coded low-voltage terminals, and provisions for electronic air cleaner and 24-volt humidifiers
- Control board stores the last five diagnostic codes in non-volatile memory; simple push-button activation outputs the fault history to a flashing red LED
- Low constant fan speed allows homeowner to activate the low-heat speed fan and to efficiently circulate air throughout the home
- Self-adjusting feature automatically adjusts to high or low stage based on outside temperature without the need for an outdoor temperature sensor
- Dual-certified for sealed combustion direct vent (2-pipe) or non-direct vent (1-pipe) applications
- Easy-to-install top venting is standard; alternate flue/vent located on right
- Fully insulated heavy-gauge steel cabinet with durable baked-enamel finish
- Foil-faced insulation lines the heat exchanger
- Designed for multi-position installation: upflow, horizontal left or right
- Airtight solid bottom for side-return applications and easy-cut tabs for effortless removal in bottom air-inlet applications
- Convenient left or right connection for gas and electric service
- Coil and furnace fit flush for most installations
- All models comply with California NOx emissions standards

MODEL	HEATING CAPACITY (BTU/H)		AFUE %	TONS A/C ¹	DIMENSIONS			SHIP WEIGHT (LBS)
	INPUT	OUTPUT			W"	D"	H"	
GMH950453BX	46,000	44,600	95	3	17½	28	40	132
GMH950703BX	69,000	66,400	95	3	17½	28	40	135
GMH950704CX	69,000	66,400	95	4	21	28	40	136
GMH950904CX	92,000	89,000	95	4	21	28	40	158
GMH950905DX	92,000	88,400	95	5	24½	28	40	172
GMH951155DX	115,000	110,500	95	5	24½	28	40	175

¹ Max tons @ 0.5" ESP

Goodman Manufacturing Company, L.P., reserves the right to discontinue, or change at any time, specifications or designs without notice or without incurring obligations.

GAS FURNACES

GCH9 / GCH95 — UP TO 95% AFUE

The Goodman® brand GCH95 & GCH9 (Convertible), Multi-Speed, Multi-Position Gas Furnaces feature our aluminized-steel, dual-diameter tubular heat exchanger and durable Silicon Nitride Hot-Surface Ignition system. This furnace is run-tested for heating or combination heating/cooling applications. With a corrosion-resistant, painted steel cabinet, this unit can be installed in a variety of locations.

Product Features

- Aluminized-steel, dual-diameter tubular heat exchanger
- Two-stage gas valve with technology that allows installer to activate the two-stage valve with the flip of a dipswitch
- Durable 110V Silicon Nitride igniter
- Furnace control board with self-diagnostics, color-coded low-voltage terminals, and provisions for electronic air cleaner and 24-volt humidifiers
- Control board stores the last five diagnostic codes in memory; simple push-button activation outputs the fault history to a flashing red LED
- Low constant fan allows homeowner to activate the low heat speed to efficiently circulate air throughout the home.
- Self-adjusting feature automatically adjusts to high or low stage based on outside temperature without an outdoor temperature sensor
- Dual-certified for sealed combustion direct vent (2-pipe) or non-direct vent (1-pipe) applications
- Easy-to-install top venting is standard
- Fully insulated, heavy-gauge steel cabinet with durable baked-enamel finish
- Foil-faced insulation lines the heat exchanger
- Designed for multi-position installation: downflow, horizontal left or right
- Convenient left or right connection for gas and electric service
- Coil and furnace fit flush for most installations
- All models comply with California NOx emissions standards



* Complete warranty details available from your local dealer or at www.goodmanmfg.com. To receive the Lifetime Heat Exchanger Limited Warranty (good for as long as you own your home), 10-Year Unit Replacement Heat Exchanger Limited Warranty, and 10-Year Parts Limited Warranty, online registration must be completed within 60 days of installation. Online registration is not required in California or Quebec.



ENERGY STAR ratings are dependent upon conditions beyond equipment installation. To make certain your HVAC equipment qualifies for the ENERGY STAR designation get complete information at www.energystar.gov.

MODEL	HEATING CAPACITY (BTU/H)		AFUE %	TONS A/C ¹	DIMENSIONS			SHIP WEIGHT (LBS)
	INPUT	OUTPUT			W"	D"	H"	
GCH950453BX	46,000	43,700	95	3	17½	28	40	132
GCH950703BX	69,000	65,550	95	3	17½	28	40	135
GCH950704CX	69,000	65,550	95	4	21	28	40	135
GCH950904CX	92,000	87,400	95	4	21	28	40	156
GCH950905DX	92,000	87,400	95	5	24½	28	40	173
GCH91155DX	115,000	106,500	93	5	24½	28	40	175

¹ Max tons @ 0.5" ESP

Goodman Manufacturing Company, L.P., reserves the right to discontinue, or change at any time, specifications or designs without notice or without incurring obligations.

GKS9 — UP TO 92.1 AFUE

The Goodman® brand GKS9 Single-Stage, Multi-Speed Upflow Gas Furnace features our aluminized-steel, dual-diameter tubular heat exchanger and robust Hot-Surface Ignition system. This furnace is run-tested for heating or combination heating/cooling applications. With a corrosion-resistant, painted steel cabinet, this unit can be installed in a variety of locations.



Product Features

- Aluminized-steel, dual-diameter tubular heat exchanger
- Single-stage combination redundant gas valve
- Durable Hot-surface igniter
- Quiet four-speed direct-drive circulator blower motor
- Furnace control board with self-diagnostics and low-voltage terminal block
- Dual-certified for sealed combustion direct vent (2-pipe) or non-direct vent (1-pipe) applications
- Easy-to-install top venting is standard
- Quiet single-speed induced draft blower
- Foil-faced insulation lines the heat exchanger
- Designed for upflow installation but can be converted to horizontal left or right with a pressure switch kit (sold separately)
- Airtight solid bottom for side-return applications and easy-cut tabs for effortless removal in bottom air-inlet applications
- Coil and furnace fit flush for most installations
- All models comply with California NOx emissions standards



* Complete warranty details available from your local dealer or at www.goodmanmfg.com. To receive the Lifetime Heat Exchanger Limited Warranty (good for as long as you own your home) and 10-Year Parts Limited Warranty, online registration must be completed within 60 days of installation. Online registration is not required in California or Quebec.



ENERGY STAR ratings are dependent upon conditions beyond equipment installation. To make certain your HVAC equipment qualifies for the ENERGY STAR designation get complete information at www.energystar.gov.

MODEL	HEATING CAPACITY (BTU/H)		AFUE %	TONS A/C ¹	DIMENSIONS			SHIP WEIGHT (LBS)
	INPUT	OUTPUT			W"	D"	H"	
GKS90453BX	46,000	42,800	92.1	3	17½	28	40	132
GKS90703BX	69,000	64,400	92.1	3	17½	28	40	135
GKS90704CX	69,000	64,400	92.1	4	21	28	40	153
GKS90904CX	92,000	86,000	92.1	4	21	28	40	158
GKS90905DX	92,000	86,000	92.1	5	24½	28	40	170
GKS91155DX	115,000	106,500	92.1	5	24½	28	40	175

¹ Max tons @ 0.5" ESP

Goodman Manufacturing Company, L.P., reserves the right to discontinue, or change at any time, specifications or designs without notice or without incurring obligations.

GMVC8 — 80% AFUE

The Goodman® brand GMVC8 Two-Stage, Variable-Speed Multi-Position Gas Furnace features our aluminized-steel, dual-diameter tubular heat exchanger and durable Silicon Nitride Hot-Surface Ignition system. This furnace is run-tested for heating or combination heating/cooling applications. With its two-stage gas valve, variable-speed circulator blower, this unit provides comfort all season long.

Product Features

- Aluminized-steel, dual-diameter tubular heat exchanger
- Convenient 33½" height unit
- ComfortNet™ Communication Systems compatible
- Two-stage gas valve operates with two-stage or single-stage thermostats
- Efficient, quiet variable-speed ECM circulator motor gently ramps up or down according to heating or cooling demand
- Durable 110V Silicon Nitride igniter
- Furnace control board with self-diagnostics, color-coded low-voltage terminals, and provisions for electronic air cleaner and 120-volt or 24-volt humidifiers
- Control board stores the last six diagnostic codes in non-volatile memory; simple push-button activation outputs the fault history
- Low, constant fan speed allows homeowner to activate low speed to efficiently circulate air throughout the home. This setting costs less than a 100-watt light bulb to operate.
- Quiet, two-speed induced draft blower
- Fully insulated, heavy-gauge steel cabinet with durable baked-enamel finish
- Designed for multi-position installation: upflow, horizontal left or right
- Removable bottom for side- or bottom-return applications
- Convenient left or right connection for gas/electric service
- Coil and furnace fit flush for most installations



* Complete warranty details available from you local dealer or at www.goodmanmfg.com. To receive the Lifetime Heat Exchanger Limited Warranty (good for as long as you own your home), 10-Year Heat Exchanger Limited Warranty, and 10-Year Parts Limited Warranty, online registration must be completed within 60 days of installation. Online registration is not required in California or Quebec.

MODEL	HIGH-FIRE RATES (BTU/H)		LOW-FIRE RATES (BTU/H)		AFUE %	TONS A/C ¹	DIMENSIONS			SHIP WEIGHT (LBS)
	INPUT	OUTPUT	INPUT	OUTPUT			W"	D"	H"	
GMVC80704BX	70,000	57,400	52,500	42,000	80	1½ to 3	17½	28	33½	152
GMVC80905CX	90,000	73,600	67,500	54,000	80	2 to 5	21	28	33½	178
GMVC81155CX	115,000	93,000	86,000	69,000	80	2 to 5	21	28	33½	194

¹ Max tons @ 0.5" ESP

Goodman Manufacturing Company, L.P., reserves the right to discontinue, or change at any time, specifications or designs without notice or without incurring obligations.

GME8 — 80% AFUE

The Goodman® brand GME8 (Convertible), Multi-Speed Multi-Position Gas Furnace features our aluminized-steel, dual-diameter tubular heat exchanger and durable Silicon Nitride Hot-Surface Ignition system, plus an efficient EEM circulator motor. With a heavy-gauge, reinforced, insulated steel cabinet and durable baked enamel finish, the GME8 can be installed in a variety of locations.



Product Features

- Aluminized-steel, dual-diameter tubular heat exchanger
- Convenient 33 $\frac{3}{8}$ " height unit
- Two-stage gas valve with convertible technology that allows installer to turn on two-stage operation with the flip of a dipswitch
- Efficient EEM circulator motor
- Durable 110V Silicon Nitride igniter
- Furnace control board with self-diagnostics, color-coded low-voltage terminals and provisions for electronic air cleaner and 24-volt humidifiers
- Control board stores the last five diagnostic codes in non-volatile memory; simple push-button activation outputs the fault history to a flashing red LED
- Low constant fan speed allows homeowner to activate the low-heat speed fan and to efficiently circulate air throughout the home
- Self-adjusting feature automatically adjusts furnace to high or low stage based on outside temperature without the need for an outdoor temperature sensor
- Fully insulated heavy-gauge steel cabinet with durable baked-enamel finish
- Foil-faced insulation lines the heat exchanger
- Designed for multi-position installation: upflow, horizontal left or right
- Convenient left or right connection for gas and electric service
- Coil and furnace fit flush for most installations
- All models comply with California NOx emissions standards

* Complete warranty details available from your local dealer or at www.goodmanmfg.com. To receive the Lifetime Heat Exchanger Limited Warranty (good for as long as you own your home), 10-Year Unit Replacement Limited Warranty, and 10-Year Parts Limited Warranty, online registration must be completed within 60 days of installation. Online registration is not required in California or Quebec.



MODEL	HIGH FIRE HEATING (BTU/H)		AFUE %	TONS A/C ¹	DIMENSIONS			SHIP WEIGHT (LBS)
	INPUT	OUTPUT			W"	D"	H"	
GME80703BX	70,000	56,000	80	3	17 $\frac{1}{2}$	28	33 $\frac{3}{8}$	130
GME80905CX	90,000	72,000	80	5	21	28	33 $\frac{3}{8}$	163
GME81155CX	115,000	92,000	80	5	21	28	33 $\frac{3}{8}$	167

¹ Max tons @ 0.5" ESP

Goodman Manufacturing Company, L.P., reserves the right to discontinue, or change at any time, specifications or designs without notice or without incurring obligations.

GAS FURNACES

GMH8 — 80% AFUE

The Goodman® brand GMH8 (Convertible), Multi-Speed Multi-Position Gas Furnace features our aluminized-steel, dual-diameter tubular heat exchanger and durable Silicon Nitride Hot-Surface Ignition system. This furnace is run-tested for heating or combination heating/cooling applications. With a heavy-gauge, reinforced, insulated steel cabinet and durable baked enamel finish, this unit can be installed in a variety of locations.

Product Features

- Aluminized-steel, dual-diameter tubular heat exchanger
- Convenient 33 $\frac{3}{8}$ " height unit
- Two-stage gas valve with convertible technology that allows installer to activate two-stage operation with the flip of a dipswitch
- Durable 110V Silicon Nitride igniter
- Furnace control board with self-diagnostics, color-coded low-voltage terminals, and provisions for electronic air cleaner and 24-volt humidifiers
- Control board stores the last five diagnostic codes in non-volatile memory; simple push-button activation outputs the fault history to a flashing red LED
- Low constant fan speed allows homeowner to activate the low-heat speed fan and to efficiently circulate air throughout the home
- Self-adjusting feature automatically adjusts furnace to high or low stage based on outside temperature without the need for an outdoor temperature sensor
- Fully insulated heavy-gauge steel cabinet with durable baked-enamel finish
- Foil-faced insulation lines the heat exchanger
- Designed for multi-position installation: upflow, horizontal left or right
- Removable bottom for side- or bottom-return applications
- Convenient left or right connection for gas and electric service
- Coil and furnace fit flush for most installations



* Complete warranty details available from you local dealer or at www.goodmanmfg.com. To receive the Lifetime Heat Exchanger Limited Warranty (good for as long as you own your home), 10-Year Unit Replacement Limited Warranty, and 10-Year Parts Limited Warranty, online registration must be completed within 60 days of installation. Online registration is not required in California or Quebec.

MODEL	HEATING CAPACITY (BTU/H)		AFUE %	TONS A/C ¹	DIMENSIONS			SHIP WEIGHT (LBS)
	INPUT	OUTPUT			W"	D"	H"	
GMH80453AN*	45,000	36,000	80%	3	14	28	33 $\frac{3}{8}$ "	115
GMH80703AN*	70,000	56,000	80%	3	14	28	33 $\frac{3}{8}$ "	125
GMH80704BN*	70,000	56,000	80%	4	17 $\frac{1}{2}$ "	28	33 $\frac{3}{8}$ "	136
GMH80903BN	90,000	72,000	80%	3	17 $\frac{1}{2}$ "	28	33 $\frac{3}{8}$ "	146
GMH80904BN*	90,000	72,000	80%	4	17 $\frac{1}{2}$ "	28	33 $\frac{3}{8}$ "	146
GMH80905CN*	90,000	72,000	80%	5	21	28	33 $\frac{3}{8}$ "	154
GMH81155CN*	115,000	92,000	80%	5	21	28	33 $\frac{3}{8}$ "	154
GMH81405DN*	140,000	112,000	80%	5	24 $\frac{1}{2}$ "	28	33 $\frac{3}{8}$ "	153

* Denotes low NOx models

¹ Max tons @ 0.5" ESP

Goodman Manufacturing Company, L.P., reserves the right to discontinue, or change at any time, specifications or designs without notice or without incurring obligations.

GDH8 — 80% AFUE

The Goodman® brand GDH8 (Convertible), Multi-Speed Downflow Gas Furnace features our aluminized-steel, dual-diameter tubular heat exchanger and durable Silicon Nitride Hot-Surface Ignition system. This furnace is run-tested for heating or combination heating/cooling applications. With a heavy-gauge, reinforced, insulated steel cabinet and durable baked enamel finish, this unit can be installed in a variety of locations.



Product Features

- Aluminized-steel, dual-diameter tubular heat exchanger
- Convenient 33 $\frac{3}{8}$ " height unit
- Two-stage gas valve with convertible technology that allows installer to activate two-stage operation with the flip of a dipswitch
- Durable 110V Silicon Nitride igniter
- Furnace control board with self-diagnostics, color-coded low-voltage terminals, and provisions for electronic air cleaner and 24-volt humidifiers
- Control board stores the last five diagnostic codes in non-volatile memory; simple push-button activation outputs the fault history to a flashing red LED
- Low constant fan speed allows homeowner to activate the low-heat speed fan and to efficiently circulate air throughout the home
- Self-adjusting feature automatically adjusts furnace to high or low stage based on outside temperature without the need for an outdoor temperature sensor
- Fully insulated heavy-gauge steel cabinet with durable baked-enamel finish
- Foil-faced insulation lines the heat exchanger
- Designed for dedicated downflow application
- Convenient left or right connection for gas and electric service
- Coil and furnace fit flush for most installations
- All models comply with California NOx emissions standards

* Complete warranty details available from your local dealer or at www.goodmanmfg.com. To receive the Lifetime Heat Exchanger Limited Warranty (good for as long as you own your home), 10-Year Unit Replacement Limited Warranty, and 10-Year Parts Limited Warranty, online registration must be completed within 60 days of installation. Online registration is not required in California or Quebec.

MODEL	HEATING CAPACITY (BTU/H)		AFUE %	TONS A/C ¹	DIMENSIONS			SHIP WEIGHT (LBS)
	INPUT	OUTPUT			W"	D"	H"	
GDH80453AX	45,000	36,000	80	3	14	28	33 $\frac{3}{8}$ "	120
GDH80703AX	70,000	56,000	80	3	14	28	33 $\frac{3}{8}$ "	130
GDH80904BX	90,000	72,000	80	4	17 $\frac{1}{2}$ "	28	33 $\frac{3}{8}$ "	153
GDH81155CX	115,000	92,000	80	5	21	28	33 $\frac{3}{8}$ "	175

¹ Max tons @ 0.5" ESP

Goodman Manufacturing Company, L.P., reserves the right to discontinue, or change at any time, specifications or designs without notice or without incurring obligations.

GMS8 — 80% AFUE

The Goodman® brand GMS8 Single-Stage, Multi-Speed Gas Furnace features our aluminized-steel, dual-diameter tubular heat exchanger and energy-efficient Hot-Surface Ignition system. This furnace is run-tested for heating or combination heating/cooling applications. With a heavy-gauge, reinforced, insulated steel cabinet and durable baked enamel finish, this unit can be installed in a variety of locations.

Product Features

- Aluminized-steel, dual-diameter tubular heat exchanger
- Convenient 33 $\frac{3}{8}$ " height unit
- Single-stage combination redundant gas valve
- Hot-surface mini-igniter
- Quiet four-speed direct-drive circulator blower motor
- Furnace control board with self-diagnostics and low-voltage terminal block
- Quiet single-speed induced draft blower
- Foil-faced insulation lines the heat exchanger
- Designed for multi-position installation: upflow, horizontal left or right
- Coil and furnace fit flush for most installations



* Complete warranty details available from your local dealer or at www.goodmanmfg.com. To receive the Lifetime Heat Exchanger Limited Warranty (good for as long as you own your home) and 10-Year Parts Limited Warranty, online registration must be completed within 60 days of installation. Online registration is not required in California or Quebec.

MODEL	HEATING CAPACITY (BTU/H)		AFUE %	TONS A/C ¹	DIMENSIONS			SHIP WEIGHT (LBS)
	INPUT	OUTPUT			W"	D"	H"	
GMS80453AN*	45,000	36,000	80%	3	14	28	33 $\frac{3}{8}$ "	120
GMS80703AN*	70,000	56,000	80%	3	14	28	33 $\frac{3}{8}$ "	130
GMS80704BN*	70,000	56,000	80%	4	17 $\frac{1}{2}$ "	28	33 $\frac{3}{8}$ "	143
GMS80904BN*	90,000	72,000	80%	4	17 $\frac{1}{2}$ "	28	33 $\frac{3}{8}$ "	153
GMS80905CN*	90,000	72,000	80%	5	21	28	33 $\frac{3}{8}$ "	163
GMS81155CN*	115,000	92,000	80%	5	21	28	33 $\frac{3}{8}$ "	163
GMS81405DN	140,000	112,000	80%	5	24 $\frac{1}{2}$ "	28	33 $\frac{3}{8}$ "	163

* Denotes low NOx models

¹ Max tons @ 0.5" ESP

Goodman Manufacturing Company, L.P., reserves the right to discontinue, or change at any time, specifications or designs without notice or without incurring obligations.

GDS8 — 80% AFUE

The Goodman® brand GDS8 Single-Stage, Multi-Speed Gas Furnace features our aluminized-steel, dual-diameter tubular heat exchanger and Hot-Surface Ignition system. This furnace is run-tested for heating or combination heating/cooling applications. With a heavy-gauge, reinforced, insulated steel cabinet and durable baked enamel finish, this unit can be installed in a variety of locations.



Product Features

- Aluminized-steel, dual-diameter tubular heat exchanger
- Convenient 33 $\frac{3}{8}$ " height unit
- Single-stage combination redundant gas valve
- Hot-surface mini-igniter
- Quiet four-speed direct-drive circulator blower motor
- Furnace control board with self-diagnostics and low-voltage terminal block
- Quiet single-speed induced draft blower
- Foil-faced insulation lines the heat exchanger
- Designed for dedicated downflow installation
- Coil and furnace fit flush for most installations
- All models comply with California NOx emissions standards



* Complete warranty details available from you local dealer or at www.goodmanmfg.com. To receive the Lifetime Heat Exchanger Limited Warranty (good for as long as you own your home) and 10-Year Parts Limited Warranty, online registration must be completed within 60 days of installation. Online registration is not required in California or Quebec.

MODEL	HEATING CAPACITY (BTU/H)		AFUE %	TONS A/C ¹	DIMENSIONS			SHIP WEIGHT (LBS)
	INPUT	OUTPUT			W"	D"	H"	
GDS80453AX	45,000	36,000	80	3	14	28	33 $\frac{3}{8}$ "	120
GDS80703AX	70,000	56,000	80	3	14	28	33 $\frac{3}{8}$ "	130
GDS80904CX	90,000	72,000	80	4	17 $\frac{1}{2}$ "	28	33 $\frac{3}{8}$ "	153
GDS81155CX	115,000	92,000	80	5	21	28	33 $\frac{3}{8}$ "	175

¹ Max tons @ 0.5" ESP
Goodman Manufacturing Company, L.P., reserves the right to discontinue, or change at any time, specifications or designs without notice or without incurring obligations.

GHS8 — 80% AFUE

The Goodman® brand GHS8 Single-Stage, Multi-Speed, High-Airflow Gas Furnace features our patented aluminized-steel, dual-diameter tubular heat exchanger and Hot-Surface Ignition system. This furnace is run-tested for heating or combination heating/cooling applications. With a heavy-gauge, reinforced, insulated steel cabinet and durable baked-enamel finish, these units can be installed in a variety of locations.

Product Features

- Aluminized-steel, dual-diameter tubular heat exchanger
- Convenient 33 $\frac{3}{8}$ " height unit
- Single-stage combination redundant gas valve
- Hot-surface mini-igniter
- Energy-saving, quiet four-speed, direct-drive circulator blower motor
- Furnace control board with self-diagnostics and low-voltage terminal block
- Quiet single-speed induced draft blower
- Foil-faced insulation lines the heat exchanger
- Designed for multi-position installation: upflow, horizontal left or right
- Coil and furnace fit flush for most installations
- All models comply with California NOx emissions standards



* Complete warranty details available from you local dealer or at www.goodmanmfg.com. To receive the Lifetime Heat Exchanger Limited Warranty (good for as long as you own your home) and 10-Year Parts Limited Warranty, online registration must be completed within 60 days of installation. Online registration is not required in California or Quebec. Full warranty details available at www.goodmanmfg.com.

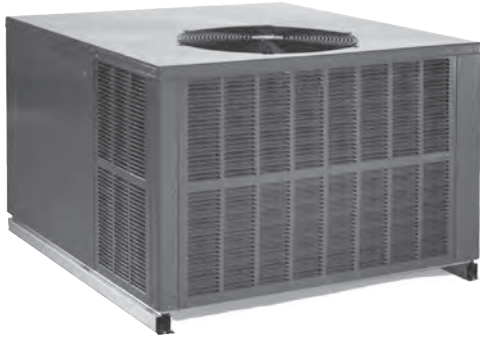
MODEL	HEATING CAPACITY (BTU/H)		AFUE %	TONS A/C ¹	DIMENSIONS			SHIP WEIGHT (LBS)
	INPUT	OUTPUT			W"	D"	H"	
GHS80453AX	45,000	36,000	80	3	14"	12 $\frac{1}{2}$ "	33 $\frac{3}{8}$ "	120
GHS80704BX	70,000	56,000	80	4	17 $\frac{1}{2}$ "	16"	33 $\frac{3}{8}$ "	130
GHS80905CX	90,000	72,000	80	5	21"	19 $\frac{1}{2}$ "	33 $\frac{3}{8}$ "	153

¹ Max tons @ 0.5" ESP

Goodman Manufacturing Company, L.P., reserves the right to discontinue, or change at any time, specifications or designs without notice or without incurring obligations.

GPC15M AIR CONDITIONER — UP TO 15 SEER

The Goodman® brand GPC15M High-Efficiency Packaged Air Conditioner provides energy-efficient cooling performance in one self-contained unit. This unit is housed in a heavy-gauge, galvanized-steel cabinet that offers a high-quality, UV-resistant powder-paint finish and allows for a ground-level or rooftop mount.



Product Features

- High-efficiency compressor with internal relief valve
- EEM blower motor
- Fully charged R-410A refrigerant
- Convertible airflow: horizontal or downflow
- Copper tube/aluminum fin coils
- Totally enclosed, permanently lubricated condenser fan motor
- Electric heat kits available as field-installed options
- Heavy-gauge galvanized-steel cabinet with attractive Architectural Gray powder-paint finish
- Fully insulated air-handling compartment with convenient access panels
- Louvered condenser coil protection
- One footprint; two heights
- When properly anchored, meets the 2001 Florida Building Code unit integrity requirements for hurricane-type winds (Anchor bracket kits available.)



* Complete warranty details available from you local dealer or at www.goodmanmfg.com. To receive the 10-Year Parts Limited Warranty, online registration must be completed within 60 days of installation. Online registration is not required in California or Quebec.



ENERGY STAR ratings are dependent upon conditions beyond equipment installation. To make certain your HVAC equipment qualifies for the ENERGY STAR designation get complete information at www.energystar.gov.

MODEL	NOMINAL COOLING CAPACITY		ELECTRIC HEAT (kW)	SEER / EER	VOLTAGE-PHASE	DIMENSIONS			dBS	SHIP WEIGHT (LBS)
	TONS	CFM				W"	D"	H"		
GPC1524M41	2	850	5,8,10	14.5 / 12	208/230-1	47	51	35	76	375
GPC1530M41	2½	1,050	5,8,10,15	14.5 / 12	208/230-1	47	51	35	76	384
GPC1536M41	3	1,150	5,8,10,15	14.5 / 12	208/230-1	47	51	35	77	416
GPC1542M41	3½	1,350	5,8,10,15	14.5 / 12	208/230-1	47	51	42¼	78	459
GPC1548M41	4	1,350	5,8,10,15,20	15 / 12	208/230-1	47	51	42¼	78	459

Goodman Manufacturing Company, L.P., reserves the right to discontinue, or change at any time, specifications or designs without notice or without incurring obligations.

PACKAGED UNITS

GPC14H AIR CONDITIONER — UP TO 14 SEER

The Goodman® brand GPC14H High-Efficiency Packaged Air Conditioner features energy-efficient cooling and heating performance in one self-contained unit. This unit is housed in a heavy-gauge, galvanized-steel cabinet protected by a high-quality, UV-resistant powder-paint finish. The GPC14H allows for ground-level or rooftop applications, and is approved for manufactured or modular homes.

Product Features

- High-efficiency compressor with internal relief valve
- Fully charged R-410A refrigerant system
- EEM blower motor
- Quiet horizontal discharge
- Copper tube/aluminum fin coil
- Totally enclosed, permanently lubricated condenser fan motor
- Electric heat kits available as field-installed options
- Heavy-gauge galvanized-steel cabinet with attractive Architectural Gray powder-paint finish
- Fully insulated blower compartment with convenient access panels
- Louvered condenser coil protection
- One footprint; three heights



* Complete warranty details available from you local dealer or at www.goodmanmfg.com. To receive the 10-Year Parts Limited Warranty, online registration must be completed within 60 days of installation. Online registration is not required in California or Quebec.



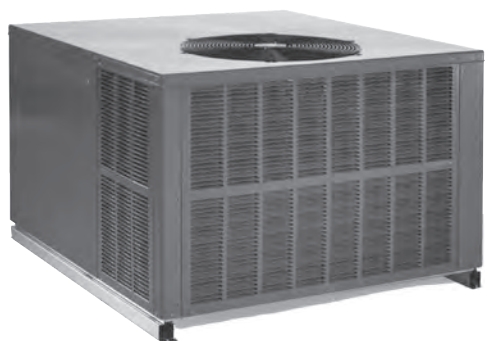
ENERGY STAR ratings are dependent upon conditions beyond equipment installation. To make certain your HVAC equipment qualifies for the ENERGY STAR designation get complete information at www.energystar.gov.

MODEL	NOMINAL COOLING CAPACITY		SEER / EER	VOLTAGE-PHASE	DIMENSIONS			DBs	SHIP WEIGHT (LBS)
	TONS	CFM			W"	D"	H"		
GPC1424H41	2	850	14.5/12.1	208/230-1	66	33	30½	76	310
GPC1430H41	2½	1,050	14.0/12.0	208/230-1	66	33	30½	76	310
GPC1436H41	3	1,200	14.0/12.0	208/230-1	66	33	35½	78	370
GPC1442H41	3½	1,300	14.5/12.0	208/230-1	66	33	35½	78	370
GPC1448H41	4	1,600	14.5/12.1	208/230-1	66	33	38½	80	400
GPC1460H41	5	1,800	14.2/12.0	208/230-1	66	33	38½	80	400

Goodman Manufacturing Company, L.P., reserves the right to discontinue, or change at any time, specifications or designs without notice or without incurring obligations.

GPC13M AIR CONDITIONER — 13 SEER

The Goodman® brand GPC13M Energy-Efficient Packaged Air Conditioner provides energy-efficient cooling performance in one self-contained unit. This unit is housed in a heavy-gauge, galvanized-steel cabinet that offers a high-quality, UV-resistant powder-paint finish and allows for a ground-level or rooftop mount.



Product Features

- Energy-efficient compressor with internal relief valve
- EEM blower motor; PSC blower motor on 3-ton units
- Fully charged R-410A refrigerant system
- Convertible airflow: horizontal or downflow
- Copper tube/aluminum fin coils
- Totally enclosed, permanently lubricated condenser fan motor
- Electric heat kits available as field-installed options
- Heavy-gauge galvanized-steel cabinet with attractive Architectural Gray powder-paint finish
- Fully insulated air-handling compartment with convenient access panels
- Louvered condenser coil protection
- One footprint; two heights
- When properly anchored, meets the 2001 Florida Building Code unit integrity requirements for hurricane-type winds (Anchor bracket kits available.)



* Complete warranty details available from your local dealer or at www.goodmanmfg.com. To receive the 10-Year Parts Limited Warranty, online registration must be completed within 60 days of installation. Online registration is not required in California or Quebec.

MODEL	NOMINAL COOLING CAPACITY		ELECTRIC HEAT (kW)	SEER / EER	VOLTAGE-PHASE	DIMENSIONS			DBs	SHIP WEIGHT (LBS)
	TONS	CFM				W"	D"	H"		
GPC1336M41	3	1,180	5, 8, 10,15	13 / 10.9	208/230-1	34%	51	47	80.1	410
GPC1348M41	4	1,700	5, 8, 10,15, 20	13 / 11	208/230-1	42%	51	47	81.7	510
GPC1360M41	5	1,750	5, 8, 10,15, 20	13 / 10.9	208/230-1	42%	51	47	80.2	533

Goodman Manufacturing Company, L.P., reserves the right to discontinue, or change at any time, specifications or designs without notice or without incurring obligations.

PACKAGED UNITS

GPC13H AIR CONDITIONER — 13 SEER

The Goodman® brand GPC13H Packaged Energy-Efficient Air Conditioner features energy-efficient cooling performance in one self-contained unit. This unit is housed in a heavy-gauge, galvanized-steel cabinet protected by a high-quality, UV-resistant powder-paint finish. The GPC13H allows for ground-level or rooftop applications, and is approved for manufactured or modular homes.

Product Features

- Energy-efficient compressor with internal relief valve
- PSC blower motor; EEM blower motor on 5-ton units
- Fully charged R-410A refrigerant system
- Quiet horizontal discharge
- Copper tube/aluminum fin coil
- Totally enclosed, permanently lubricated condenser fan motor
- Electric heat kits available as field-installed options
- Heavy-gauge galvanized-steel cabinet with attractive Architectural Gray powder-paint finish
- Fully insulated blower compartment with convenient access panels
- Louvered condenser coil protection
- One footprint; three heights



* Complete warranty details available from you local dealer or at www.goodmanmfg.com. To receive the 10-Year Parts Limited Warranty, online registration must be completed within 60 days of installation. Online registration is not required in California or Quebec.

MODEL	NOMINAL COOLING CAPACITY		ELECTRIC HEAT (kW)	SEER/EER	VOLTAGE-PHASE	DIMENSIONS			DBS	SHIP WEIGHT (LBS)
	TONS	CFM				W"	D"	H"		
GPC1324H41	2	875	5, 8, 10	13.0 / 11.0	208/230-1	66½"	34"	30"	76	310
GPC1330H41	2½	1,080	5, 8, 10,15	13.0 / 11.0	208/230-1	66½"	34"	30"	76	310
GPC1336H41	3	1,205	5, 8, 10,15,20	13.0 / 11.0	208/230-1	66½"	34"	35"	78	370
GPC1342H41	3½	1,410	5, 8, 10,15, 20	13.0 / 11.0	208/230-1	66½"	34"	35"	78	370
GPC1348H41	4	1,585	5, 8, 10,15, 20	13.0 / 11.0	208/230-1	66½"	34"	38¾"	80	400
GPC1360H41	5	1,850	5, 8, 10,15, 20	13.0 / 11.0	208/230-1	66½"	34"	38¾"	80	400

Goodman Manufacturing Company, L.P., reserves the right to discontinue, or change at any time, specifications or designs without notice or without incurring obligations.

GPH15M HEAT PUMP — UP TO 15 SEER/UP TO 8.0 HSPF

The Goodman® brand GPH15M High-Efficiency Packaged Heat Pump provides energy-efficient cooling and heating performance in one self-contained unit. This unit uses R-410A chlorine-free refrigerant. The GPH15M is housed in a heavy-gauge, galvanized-steel cabinet that offers a high-quality, UV-resistant powder-paint finish and allows for a ground-level or rooftop mount.



* Complete warranty details available from your local dealer or at www.goodmanmfg.com. To receive the 10-Year Parts Limited Warranty, online registration must be completed within 60 days of installation. Online registration is not required in California or Quebec.



ENERGY STAR ratings are dependent upon conditions beyond equipment installation. To make certain your HVAC equipment qualifies for the ENERGY STAR designation get complete information at www.energystar.gov.

Product Features

- High-efficiency compressor with internal relief valve
- Fully-charged R-410A refrigerant system
- EEM blower motor
- Liquid-line filter dryer
- Two-stage heating & cooling on 4- & 5-ton units
- Convertible airflow: horizontal or downflow
- Copper tube/aluminum fin coils
- Totally enclosed, permanently lubricated condenser fan motor
- Electric heat kits available as field-installed options
- Heavy-gauge galvanized-steel cabinet with attractive Architectural Gray powder-paint finish
- Fully insulated air-handling compartment with convenient access panels
- Louvered condenser coil protection
- One footprint; two heights
- When properly anchored, meets the 2001 Florida Building Code unit integrity requirements for hurricane-type winds (Anchor bracket kits available.)

MODEL	NOMINAL RATINGS			ELECTRIC HEAT (kW)	SEER/ EER	VOLTAGE-PHASE	DIMENSIONS			DBS	SHIP WEIGHT (LBS)
	COOLING (TONS)	HEATING (BTU/H)	COOLING CFM				W"	D"	H"		
GPH1524M41	2	24,000	860	5,8,10	15 / 12	208-230/1	47	51	34¾	76	376
GPH1530M41	2½	29,000	1,000	5,8,10	15 / 12	208-230/1	47	51	34¾	76	385
GPH1536M41	3	35,400	1,200	5,8,10,15	15 / 12	208-230/1	47	51	34¾	76	438
GPH1542M41	3½	41,000	1,250	5,8,10,15	15 / 11	208-230/1	47	51	34¾	77	460
GPH1543M41	3½	40,500	1,250	5,8,10,15	15 / 12	208-230/1	47	51	42¼	78	492
GPH1548M41	4	46,500	1,700	5,8,10,15, 20	15 / 11.3	208-230/1	47	51	42¼	78	492
GPH1549M41	4	45,500	1,350	5,8,10,15, 20	15 / 12	208-230/1	47	51	42¼	78	492
GPH1560M41	5	55,500	1,800	5,8,10,15, 20	14 / 10.2	208-230/1	47	51	42¼	78	523

Goodman Manufacturing Company, L.P., reserves the right to discontinue, or change at any time, specifications or designs without notice or without incurring obligations.

PACKAGED UNITS

GPH14H HEAT PUMP — UP TO 15 SEER/UP TO 8.5 HSPF

The Goodman® brand GPH14H High-Efficiency Packaged Heat Pump provides energy-efficient cooling and heating performance in one self-contained unit. The GPH14H is housed in a heavy-gauge, galvanized-steel cabinet that offers a high-quality, UV-resistant powder-paint finish and allows for a ground-level or rooftop mount.

Product Features

- High-efficiency compressor with internal relief valve
- EEM blower motor
- Fully charged R-410A refrigerant system
- Quiet horizontal discharge
- Copper tube/aluminum fin coil
- Totally enclosed, permanently lubricated condenser fan motor
- Electric heat kits available as field-installed options
- Heavy-gauge galvanized-steel cabinet with attractive Architectural Gray powder-paint finish
- Fully insulated air-handling compartment with convenient access panels
- Louvered condenser coil protection
- One footprint; three heights



* Complete warranty details available from you local dealer or at www.goodmanmfg.com. To receive the 10-Year Parts Limited Warranty, online registration must be completed within 60 days of installation. Online registration is not required in California or Quebec.



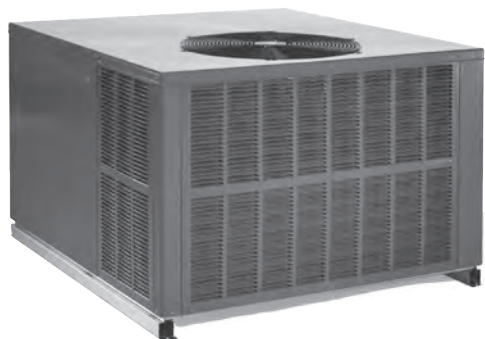
ENERGY STAR ratings are dependent upon conditions beyond equipment installation. To make certain your HVAC equipment qualifies for the ENERGY STAR designation get complete information at www.energystar.gov.

MODEL	NOMINAL RATINGS			ELECTRIC HEAT (KW)	SEER/EER	VOLTAGE-PHASE	DIMENSIONS			DBs	SHIP WEIGHT (LBS)
	COOLING (TONS)	COOLING (CFM)	HEATING (BTU/H)				W"	D"	H"		
GPH1424H41	2	850	22,800	5, 8, 10	15.0 / 12.2	208/230-1	66	33	30½	76	325
GPH1430H41	2½	1,050	27,600	5, 8, 10,15	14.5 / 12.2	208/230-1	66	33	30½	76	325
GPH1436H41	3	1,200	33,000	5, 8, 10,15	14.3 / 12	208/230-1	66	33	35½	78	385
GPH1442H41	3½	1,300	37,500	5, 8, 10,15, 20	14.2 / 12	208/230-1	66	33	35½	78	385
GPH1448H41	4	1,600	45,000	5, 8, 10,15, 20	14.5 / 12.1	208/230-1	66	33	38½	80	415
GPH1460H41	5	1,800	54,500	5, 8, 10,15, 20	14.2 / 12	208/230-1	66	33	38½	80	415

Goodman Manufacturing Company, L.P., reserves the right to discontinue, or change at any time, specifications or designs without notice or without incurring obligations.

GPH13M HEAT PUMP — 13 SEER/UP TO 8.0 HSPF

The Goodman® brand GPH13M Energy-Efficient Packaged Heat Pump provides energy-efficient cooling and heating performance in one self-contained unit. The GPH13M is housed in a heavy-gauge, galvanized-steel cabinet that offers a high-quality, UV-resistant powder-paint finish and allows for a ground-level or rooftop mount.



Product Features

- Energy-efficient compressor with internal relief valve
- PSC blower motor; EEM blower motor on 4- & 5-ton units
- Fully charged R-410A refrigerant system
- Convertible airflow: horizontal or downflow
- Copper tube/aluminum fin coils
- Totally enclosed, permanently lubricated condenser fan motor
- Electric heat kits available as field-installed options
- Heavy-gauge galvanized-steel cabinet with attractive Architectural Gray powder-paint finish
- Fully insulated air-handling compartment with convenient access panels
- Louvered condenser coil protection
- One footprint; two heights
- When properly anchored, meets the 2001 Florida Building Code unit integrity requirements for hurricane-type winds (Anchor bracket kits available.)



* Complete warranty details available from you local dealer or at www.goodmanmfg.com. To receive the 10-Year Parts Limited Warranty, online registration must be completed within 60 days of installation. Online registration is not required in California or Quebec.

MODEL	NOMINAL RATINGS			ELECTRIC HEAT (kW)	SEER/EER	VOLTAGE-PHASE	DIMENSIONS			DBS	SHIP WEIGHT (LBS)
	COOLING (TONS)	COOLING CFM	HEATING (BTU/H)				W"	D"	H"		
GPH1324M41	2	825	23,000	5, 8, 10	13 / 11	208/230-1	47	51	34%	76.7	405
GPH1330M41	2½	1050	28,800	5, 8, 10	13 / 10.8	208/230-1	47	51	34%	75.3	410
GPH1336M41	3	1150	34,200	5, 8, 10,15	13 / 10.9	208/230-1	47	51	34%	81.3	435
GPH1342M41	3½	1300	40,000	5, 8, 10,15	13 / 11	208/230-1	47	51	34%	80.1	440
GPH1348M41	4	1720	45,500	5, 8, 10,15, 20	13 / 11	208/230-1	47	51	42%	79.1	520
GPH1360M41	5	1800	55,000	5, 8, 10,15, 20	13 / 10.9	208/230-1	47	51	42%	80.2	533

Goodman Manufacturing Company, L.P., reserves the right to discontinue, or change at any time, specifications or designs without notice or without incurring obligations.

PACKAGED UNITS

GPH13H HEAT PUMP — 13 SEER/UP TO 8.0 HSPF

The Goodman® brand GPH13H Energy-Efficient Packaged Heat Pump provides energy-efficient cooling and heating performance in one self-contained unit. The GPH13H is housed in a heavy-gauge, galvanized-steel cabinet that offers a high-quality, UV-resistant powder-paint finish and allows for a ground-level or rooftop mount.

Product Features

- Energy-efficient compressor with internal relief valve
- PSC blower motor; EEM blower motor on 5-ton units
- Fully charged R-410A refrigerant system
- Quiet horizontal discharge
- Copper tube/aluminum fin coil
- Totally enclosed, permanently lubricated condenser fan motor
- Electric heat kits available as field-installed options
- Heavy-gauge galvanized-steel cabinet with attractive Architectural Gray powder-paint finish
- Fully insulated air handling compartment with convenient access panels
- Louvered condenser coil protection
- One footprint; three heights



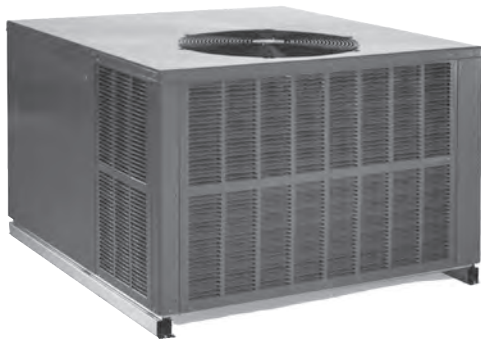
* Complete warranty details available from you local dealer or at www.goodmanmfg.com. To receive the 10-Year Parts Limited Warranty, online registration must be completed within 60 days of installation. Online registration is not required in California or Quebec.

MODEL	NOMINAL RATINGS			ELECTRIC HEAT (kW)	SEER/EER	VOLTAGE-PHASE	DIMENSIONS			dBs	SHIP WEIGHT (LBS)
	COOLING (TONS)	COOLING (CFM)	HEATING (BTU/H)				W"	D"	H"		
GPH1324H41	2	875	24,000	5, 8, 10	13.0 / 11.0	208/230-1	66½	34	30	76	325
GPH1330H41	2½	1,050	27,400	5, 8, 10,15	13.0 / 11.0	208/230-1	66½	34	30	76	325
GPH1336H41	3	1,205	33,600	5, 8, 10,15	13.0 / 11.0	208/230-1	66½	34	35	78	385
GPH1342H41	3½	1,410	38,000	5, 8, 10,15, 20	13.0 / 11.0	208/230-1	66½	34	35	78	385
GPH1348H41	4	1,585	45,000	5, 8, 10,15, 20	13.0 / 11.0	208/230-1	66½	34	38¾	80	415
GPH1360H41	5	1,850	54,400	5, 8, 10,15, 20	13.0 / 11.0	208/230-1	66½	34	38¾	80	415

Goodman Manufacturing Company, L.P., reserves the right to discontinue, or change at any time, specifications or designs without notice or without incurring obligations.

GPG15 Gas/Electric Unit — UP TO 15 SEER/80% AFUE

The Goodman® brand GPG15 High-Efficiency Packaged Gas/Electric unit provides high-efficiency performance at reasonable operating costs. This unit is housed in a heavy-gauge, zinc-coated steel cabinet with a weather-resistant, powder-paint finish and allows for a ground-level or rooftop mount.



* Complete warranty details available from you local dealer or at www.goodmanmfg.com. To receive the 10-Year Parts Limited Warranty, online registration must be completed within 60 days of installation. Online registration is not required in California or Quebec.



ENERGY STAR ratings are dependent upon conditions beyond equipment installation. To make certain your HVAC equipment qualifies for the ENERGY STAR designation get complete information at www.energystar.gov.

Product Features

- High-efficiency compressor; two-stage compressor on 3-, 4-, and 5-ton models
- ECM (X-13) blower motor
- Durable, corrosion-resistant, aluminized-steel tubular heat exchanger
- Fully charged R-410A refrigerant system
- Copper tube/aluminum fin coil
- Redundant two-stage gas valve; natural gas with easy conversion to propane
- Power-assisted combustion
- Direct spark ignition system includes a microprocessor-based control for the entire ignition sequence
- All blower operation and all safety circuits complete with self-diagnostics
- Loss-of-charge protection
- California Low NOx approved
- Fully insulated heavy-gauge, zinc-coated steel cabinet with UV-resistant powder-paint finish
- Horizontal or downflow application
- Convenient access panels
- One roof curb fits all units
- When properly anchored, meets the 2001 Florida Building Code unit integrity requirements for hurricane-type winds (Anchor bracket kits available.)

MODEL	NOMINAL CAPACITIES		SEER/ EER	VOLTAGE- PHASE	DIMENSIONS			DBS	SHIP WEIGHT (LBS)
	COOLING (TONS)	HEATING (BTU/H)			W"	D"	H"		
GPG152407041AA	2	69,000	15 / 12	208/230-1	47	51	34%	76	439
GPG153009041AA	2½	92,000	14.5 / 12	208/230-1	47	51	34%	76	475
GPG153609041AA	3	92,000	15 / 11	208/230-1	47	51	34%	76	480
GPG153609041AB	3	92,000	15 / 11	208/230-1	47	51	34%	76	480
GPG153709041AA	3	92,000	14.5 / 12	208/230-1	47	51	34%	76	480
GPG154211541AA	3½	115,000	14.5 / 12	208/230-1	47	51	42%	78	560
GPG154811541AA	4	115,000	15 / 11	208/230-1	47	51	42%	78	560
GPG154811541AB	4	115,000	15 / 11	208/230-1	47	51	42%	78	560
GPG154911541AA	4	115,000	15 / 12	208/230-1	47	51	42%	78	560
GPG156014041AA	5	138,000	14 / 10.1	208/230-1	47	51	42%	78	565
GPG156014041AB	5	138,000	14 / 10.1	208/230-1	47	51	42%	78	565

Goodman Manufacturing Company, L.P., reserves the right to discontinue, or change at any time, specifications or designs without notice or without incurring obligations.

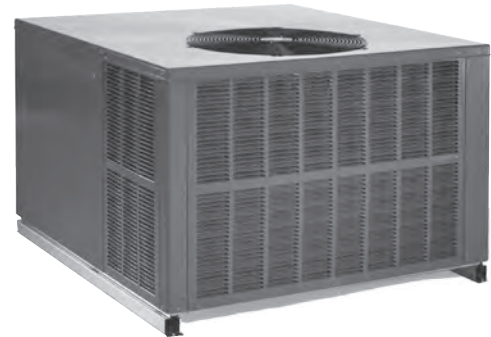
PACKAGED UNITS

GPG13M Gas/Electric Unit — 13 SEER/80% AFUE

The Goodman® brand GPG13M Packaged Gas/Electric Unit features energy-efficient cooling and heating performance in one self-contained unit. The GPG13M is housed in a heavy-gauge, galvanized-steel cabinet with a high-quality, UV-resistant powder-paint finish and allows for a ground-level or rooftop mount and horizontal or downflow applications.

Product Features

- Energy-efficient compressor with internal relief valve
- PSC blower motor; EEM blower motor on 4- & 5-ton units
- Fully charged R-410A refrigerant system
- Copper tube/aluminum fin coils
- Redundant gas valve for natural gas with easy conversion to propane
- Durable, corrosion-resistant aluminized-steel tubular heat exchanger
- Direct-spark ignition system includes a microprocessor-based control for the entire ignition sequence
- All blower operation and all safety circuits complete with self-diagnostics
- All models comply with California NOx standards
- Heavy-gauge, galvanized-steel cabinet with UV-resistant powder-paint finish
- Fully insulated cabinet
- One roof curb fits all units
- One footprint; two heights
- Convenient access panels
- Fits in a standard-size pick-up truck
- When properly anchored, meets the 2001 Florida Building Code unit integrity requirements for hurricane-type winds (Anchor bracket kits available.)



* Complete warranty details available from you local dealer or at www.goodmanmfg.com. To receive the 10-Year Parts Limited Warranty, online registration must be completed within 60 days of installation. Online registration is not required in California or Quebec.

MODEL	NOMINAL RATINGS			SEER/ EER	VOLTAGE- PHASE	DIMENSIONS			DBS	SHIP WEIGHT (LBS)
	COOLING (TONS)	COOLING CFM	HEATING (BTU/H)			W"	D"	H"		
GPG1324045M41	2	750	46,000	13.0 / 11.0	208/230-1	47	51	34%	78	425
GPG1324070M41	2	750	69,000	13.0 / 11.0	208/230-1	47	51	34%	78	439
GPG1330045M41	2½	1,000	46,000	13.0 / 11.0	208/230-1	47	51	34%	78	438
GPG1330070M41	2½	1,000	69,000	13.0 / 11.0	208/230-1	47	51	34%	78	442
GPG1336045M41	3	1,200	46,000	13.0 / 10.75	208/230-1	47	51	34%	78	470
GPG1336070M41	3	1,200	69,000	13.0 / 10.75	208/230-1	47	51	34%	78	475
GPG1336090M41	3	1,200	92,000	13.0 / 10.75	208/230-1	47	51	34%	78	480
GPG1342070M41	3½	1,350	69,000	13.0 / 11.0	208/230-1	47	51	42%	78	515
GPG1342090M41	3½	1,350	92,000	13.0 / 11.0	208/230-1	47	51	42%	78	520
GPG1348070M41	4	1,510	69,000	13.0 / 11.0	208/230-1	47	51	42%	80	540
GPG1348090M41	4	1,510	92,000	13.0 / 11.0	208/230-1	47	51	42%	80	545
GPG1348115M41	4	1,510	115,000	13.0 / 11.0	208/230-1	47	51	42%	80	550
GPG1360090M41	5	1,810	92,000	13.0 / 11.0	208/230-1	47	51	42%	80	555
GPG1360115M41	5	1,810	115,000	13.0 / 11.0	208/230-1	47	51	42%	80	560
GPG1360140M41	5	1,810	138,000	13.0 / 11.0	208/230-1	47	51	42%	80	565

Goodman Manufacturing Company, L.P., reserves the right to discontinue, or change at any time, specifications or designs without notice or without incurring obligations.

AEPF — MULTI-POSITION, VARIABLE SPEED

The Goodman® brand AEPF Multi-Position, Variable-Speed Air Handler is suitable for use with refrigerants R-410A and R-22. This unit's blower motor allows for a soft start and stop for quieter, more efficient operation and helps reduce the cold blast of air upon heating start-up. Using an ECM™ motor, this air handler is ideal for new or retrofit applications.



* Complete warranty details available from your local dealer or at www.goodmanmfg.com. To receive the 10-Year Parts Limited Warranty, online registration must be completed within 60 days of installation. Online registration is not required in California or Quebec.

Product Features

- Suitable for use with refrigerants R-410A and R-22
- Check flowrate for cooling and heat pump applications
- Variable-speed motor
- Provides constant CFM over a wide range of static pressure conditions independent of duct system; provides low CFM for efficient fan-only operation
- Up to 14 field-selectable airflow settings can be adjusted to optimize the system's CFM for each individual mode of operation
- Compatible with heat pumps and two-stage cooling applications
- Built-in coil has horizontal, upflow, and downflow drain pans with secondary connections
- Complies with the factory-sealed Air Handling Credit with or without field-installed filter kits as listed in the 2001 Florida Building Code, Chapter 13, Section 610.2.A.2.1
- AHRI Certified; ETL Listed
- Fully insulated, painted steel cabinet with Architectural Gray finish
- Multi-position — upflow, downflow or horizontal installations
- Built-in filter rack for 1" filter (filter not included)
- Low-voltage cabinet connections; control circuit is arranged to permit staging
- Top entry for power supply; top or side low-voltage entry
- Factory-sealed to achieve 2% or less leakage rate with or without field-installed filter kits at 1.0" water gauge external duct static pressure
- 3 kW to 21 kW electric heat kits available as field-installed options

>> The AEPF air handler will be replaced by the ComfortNet Communication system-compatible AVPTC in the fourth quarter.

MODEL	NOMINAL RATINGS		VOLTAGE	DIMENSIONS			SERVICE VALVE		SHIP WEIGHT (LBS)
	COOLING (TONS)	CFM ¹ (HIGH / LOW)		W"	D"	H"	LIQUID	SUCTION	
AEPF183016	1½ to 2½	1,200 / 600	208/230	19¾	22	46¾	¾"	¾"	125
AEPF313716	2½ to 3	1,300 / 1,200	208/230	22	24	53¾	¾"	¾"	176
AEPF426016	3½ to 5	2,000 / 1,200	208/230	22	24	53¾	¾"	¾"	195

Goodman Manufacturing Company, L.P., reserves the right to discontinue, or change at any time, specifications or designs without notice or without incurring obligations.

ASPF — MULTI-POSITION

The Goodman® brand ASPF Multi-Position Air Handler is suitable for use with refrigerants R-410A and R-22. This unit's blower design includes an EEM motor that can enhance the efficiency of your Goodman air conditioners and heat pumps.

Product Features

- Suitable for use with refrigerants R-410A and R-22
- Check flowrate for cooling and heat pump applications
- Energy-efficient, fixed-speed motor (EEM)
- Built-in coil has horizontal, upflow, and downflow drain pans with secondary drain connections
- Complies with the Factory-sealed Air Handling Credit with or without field-installed filter kits as listed in the 2001 Florida Building Code, Chapter 13, Section 610.2.A.2.1
- AHRI Certified; ETL Listed
- Fully insulated, painted steel cabinet with Architectural Gray finish
- Multi-position — upflow, downflow or horizontal installations
- Built-in filter rack for 1" filter (filter not included)
- Low-voltage cabinet connections
- Power supply on top; low-voltage entry on top or side
- Factory-sealed to achieve 2% or less leakage rate at 1.0" water gauge external duct static pressure
- 3 kW to 21 kW electric heat available as a field-installed option



* Complete warranty details available from you local dealer or at www.goodmanmfg.com. To receive the 10-Year Parts Limited Warranty, online registration must be completed within 60 days of installation. Online registration is not required in California or Quebec.

MODEL	NOMINAL RATINGS		VOLTAGE	DIMENSIONS			SERVICE VALVE		SHIP WEIGHT (LBS)
	COOLING (TONS)	CFM ¹ HIGH/LOW		W"	D"	H"	LIQUID	SUCTION	
ASPF183016	1½ to 2½	1,085/650	208/230	19¾	22	46¾	¾"	¾"	125
ASPF313716	2½ to 3	1,350/600	208/230	22	24	53¾	¾"	¾"	176
ASPF426016	3½ to 5	2,000/1,040	208/230	22	24	53¾	¾"	¾"	195

Goodman Manufacturing Company, L.P., reserves the right to discontinue, or change at any time, specifications or designs without notice or without incurring obligations.

ARPF — MULTI-POSITION, MULTI-SPEED

The Goodman® brand ARPF Multi-Position, Multi-Speed Air Handler is suitable for use with refrigerants R-410A and R-22. This unit features a check flowrater expansion device as well as direct-drive, multi-speed motor for air-volume variation. The ARPF may be installed in a variety of locations.



Product Features

- Suitable for use with refrigerants R-410A and R-22
- Check flowrater for cooling and heat pump applications
- Direct-drive, multi-speed motor
- Transformer and blower time-delay on all units
- Complies with the factory-sealed Air Handling Credit with or without field-installed filter kits as listed in the 2001 Florida Building Code, Chapter 13, Section 610.2.A.2.1
- AHRI Certified; ETL Listed
- Fully insulated, painted steel cabinet with attractive Architectural Gray finish
- Built-in coil has horizontal, upflow, and downflow drain pans with secondary drain connections
- Built-in filter rack for 1" filter (filter not included)
- Power supply entry at top; low-voltage entry on left side and top
- Factory-sealed to achieve 2% or less leakage rate with or without field-installed filter kits at 1.0" water gauge external duct static pressure
- 3 kW to 21 kW electric heat kits available as field-installed options

* Complete warranty details available from you local dealer or at www.goodmanmfg.com. To receive the 10-Year Parts Limited Warranty, online registration must be completed within 60 days of installation. Online registration is not required in California or Quebec.

MODEL	NOMINAL RATINGS (BTU/H)				VOLTAGE	DIMENSIONS			SERVICE VALVE		SHIP WEIGHT (LBS)
	COOLING (TONS)	CFM ¹ HIGH	CFM ¹ MED	CFM ¹ LOW		W"	D"	H"	LIQUID	SUCTION	
ARPF182416*	1½ to 2	1,025	790	570	208 / 240	15½	22	42¾	¾	¾	116
ARPF193116*	1½ to 2½	1,025	780	545	208 / 240	19½	22	46¾	¾	¾	155
ARPF303016*	2½	1,330	1,230	980	208 / 240	19½	22	46¾	¾	¾	144
ARPF363616*	3	1,230	1,140	955	208 / 240	19½	22	46¾	¾	¾	164
ARPF364216*	3 to 3½	1,645	1,440	1,275	208 / 240	22	24	53¾	¾	¾	160
ARPF374316*	3 to 3½	1,925	1,550	1,345	208 / 240	22	24	53¾	¾	¾	195
ARPF486016*	4 to 5	1,985	1,875	1,650	208 / 240	22	24	53¾	¾	¾	183
ARPF496116*	4 to 5	1,915	1,795	1,585	208/240	22	24	53¾	¾	¾	192

¹ @ 0.3" ESP

Goodman Manufacturing Company, L.P., reserves the right to discontinue or change at any time specifications or designs without notice or without incurring obligations.

ADPF — DOWNFLOW MULTI-SPEED

The Goodman® brand ADPF Downflow Multi-Speed Air Handlers are suitable for use with refrigerants R-410A and R-22. These units feature a check flowrater expansion device and direct-drive, multi-speed motor for air volume variation.

Product Features

- Suitable for use with refrigerants R-410A and R-22
- Check flowrater for cooling and heat pump applications
- Direct-drive, multi-speed motor
- Transformer and blower time-delay on all units
- Dedicated downflow design requires no field modification
- AHRI Certified; ETL Listed
- Fully insulated, painted steel cabinet with attractive Architectural Gray finish
- Built-in coil has a downflow drain pan with secondary drain connections
- Power supply entry at top; low-voltage entry on left side and top
- 3 kW to 21 kW electric heat kits available as field-installed options



* Complete warranty details available from you local dealer or at www.goodmanmfg.com. To receive the 10-Year Parts Limited Warranty, online registration must be completed within 60 days of installation. Online registration is not required in California or Quebec.

MODEL	NOMINAL RATINGS (BTU/H)				VOLTAGE	DIMENSIONS			SERVICE VALVE		SHIP WEIGHT (LBS)
	COOLING (TONS)	CFM ¹ HIGH	CFM ¹ MED	CFM ¹ LOW		W"	D"	H"	LIQUID	SUCTION	
ADPF182416	1½ to 2	1,025	790	570	208/240	15½	22	42¾	¾"	¾"	96
ADPF304216	2½ to 3½	1,645	1,440	1,275	208/240	22	24	53¾	¾"	¾"	131
ADPF486016	4 to 5	1,985	1,875	1,650	208/240	22	24	53¾	¾"	¾"	151

¹ @ 0.3" ESP

Goodman Manufacturing Company, L.P., reserves the right to discontinue or change at any time specifications or designs without notice or without incurring obligations.

ARUF — MULTI-POSITION

The Goodman® brand ARUF Multi-Position Air Handler features a check flowrate expansion device and is suitable for use with refrigerants R-410A and R-22. This unit has a fully insulated steel cabinet with a rust-resistant, galvanized, leather grain-embossed finish and painted front panels. The ARUF is ideal for new or retrofit applications and may be installed in a variety of locations.



Product Features

- Suitable for use with refrigerants R-410A and R-22
- Direct-drive, multi-speed motor
- Transformer and blower time delay on all units
- Check flowrate for cooling and heat pump applications
- AHRI Certified; ETL Listed
- Fully insulated steel cabinet with rust-resistant, galvanized, leather grain-embossed finish and painted front panels
- Built-in coil has horizontal, upflow, and downflow drain pans with secondary drain connections
- Built-in filter rack for 1" filter (filter not included)
- Power supply entry at top; low-voltage entry on left and top
- 3 kW to 21 kW electric heat kits available as a field-installed accessory



* Complete warranty details available from your local dealer or at www.goodmanmfg.com. To receive the 10-Year Parts Limited Warranty, online registration must be completed within 60 days of installation. Online registration is not required in California or Quebec.

MODEL	NOMINAL RATINGS (BTU/H)				VOLTAGE	DIMENSIONS			SERVICE VALVE		SHIP WEIGHT (LBS)
	COOLING (TONS)	CFM ¹ HIGH	CFM ¹ MED	CFM ¹ LOW		W"	D"	H"	LIQUID	SUCTION	
ARUF172916*	1½ to 2½	1,025	790	570	208/240	15½	22	42¾	¾	¾	110
ARUF182416*	1½ to 2	1,025	790	570	208/240	15½	22	42¾	¾	¾	116
ARUF193116*	1½ to 2½	1,025	780	545	208/240	19½	22	46¾	¾	¾	155
ARUF303016*	2½	1,330	1,230	980	208/240	19½	22	46¾	¾	¾	144
ARUF363616*	3	1,230	1,140	955	208/240	19½	22	46¾	¾	¾	164
ARUF364216*	3 to 3½	1,645	1,440	1,275	208/240	22	24	53¾	¾	¾	173
ARUF374316*	3 to 3½	1,925	1,550	1,345	208/240	22	24	53¾	¾	¾	195
ARUF486016*	4 to 5	1,985	1,875	1,650	208/240	22	24	53¾	¾	¾	183
ARUF496116*	4 to 5	1,915	1,795	1,585	208/240	22	24	53¾	¾	¾	192

¹ @ 0.3" ESP

Goodman Manufacturing Company, L.P., reserves the right to discontinue or change at any time specifications or designs without notice or without incurring obligations.

MBVC/MBR — MODULAR BLOWERS

The Goodman® brand MBVC/MBR Modular Blowers are tailor-made for exceptional energy efficiency. These blowers are designed with quality components and assembled with excellent craftsmanship. When matched with our cased coils for upflow, downflow, and horizontal applications, these two-piece blower coils increase both installation and application flexibility.

Product Features

- MBVC has a variable-speed blower motor and is compatible with the ComfortNet™ Communicating System family of products
- MBR is a multi-speed blower — motor speed is easily changed
- Cooling or heat pump applications: upflow, downflow, and horizontal applications
- MBR control board includes a fan delay in the cooling mode and is isolated from the air stream
- 3 kW to 21 kW electric heat kits available as field-installed options
- AHRI Certified; ETL Listed
- Durable cabinet of painted galvanized steel
- Foil-faced insulation lines the cabinet to help reduce operating sound and possible cabinet condensation



* Complete warranty details available from you local dealer or at www.goodmanmfg.com. To receive the 10-Year Parts Limited Warranty, online registration must be completed within 60 days of installation. Online registration is not required in California or Quebec.

MODEL	CFM ¹ (HIGH / MED / LOW)	VOLTAGE- PHASE	DIMENSIONS			SHIP WEIGHT (LBS)
			W"	D"	H"	
MBVC1200AA-1	1,200 - 600	208/230-1	17½	21	26	72
MBVC1600AA-1	1,600 - 1,200	208/230-1	21	21	30	82
MBVC2000AA-1	2,000 - 1,200	208/230-1	24½	21	30	94
MBR0800AA-1	910 / 720 / 500	208/230-1	17½	21	26	72
MBR1200AA-1	1,100 / 1,060 / 940	208/230-1	17½	21	26	72
MBR1600AA-1	1,580 / 1,380 / 1,000	208/230-1	21	21	30	82
MBR2000AA-1	1,860 / 1,510 / 1,320	208/230-1	24½	21	30	94

Goodman Manufacturing Company, L.P., reserves the right to discontinue, or change at any time, specifications or designs without notice or without incurring obligations.

AWUF — WALL MOUNT

The Goodman® brand AWUF Air Handler is designed to be vertically wall- or stud-mounted. This unit features a check flowrater and direct-drive, multi-speed motor. The AWUF is housed in a fully insulated, galvanized-steel cabinet.



Product Features

- Suitable for use with refrigerants R-410A and R-22
- Check flowrater for cooling and heat pump applications
- Direct-drive, multi-speed motor
- Sequence-controlled, rust-resistant nickel chromium heating elements of 3, 5, 8 and 10 kW
- Rifled aluminum tubing and corrugated aluminum fins
- AHRI Certified; ETL Listed
- Thermoplastic drain pan with bottom primary/secondary drain connection
- Built-in filter rack (filter included)
- Factory-installed pull-type disconnect
- Large chassis (2½- and 3-ton units) – front return only; small chassis (1½- and 2-ton units) – front or bottom return
- Wall-hanging bracket provided

* Complete warranty details available from you local dealer or at www.goodmanmfg.com. To receive the 10-Year Parts Limited Warranty, online registration must be completed within 60 days of installation. Online registration is not required in California or Quebec.

MODEL	NOMINAL CAPACITY			ELECTRIC HEAT (kW)	VOLTAGE	DIMENSIONS			SERVICE VALVE		SHIP WEIGHT (LBS)
	COOLING (TONS)	CFM HIGH	CFM LOW			W"	D"	H"	LIQUID	SUCTION	
AWUF180316	1½	730	720	5	240/208	20 ³ / ₁₆	16 ⁵ / ₁₆	36	¾	¾	81
AWUF180516	1½	730	720	5	240/208	20 ³ / ₁₆	16 ⁵ / ₁₆	36	¾	¾	81
AWUF180816	1½	730	720	8	240/208	20 ³ / ₁₆	16 ⁵ / ₁₆	36	¾	¾	81
AWUF240316	2	830	800	5	240/208	20 ³ / ₁₆	16 ⁵ / ₁₆	36	¾	¾	84
AWUF240516	2	830	800	5	240/208	20 ³ / ₁₆	16 ⁵ / ₁₆	36	¾	¾	84
AWUF240816	2	830	800	8	240/208	20 ³ / ₁₆	16 ⁵ / ₁₆	36	¾	¾	84
AWUF241016	2	830	800	10	240/208	20 ³ / ₁₆	16 ⁵ / ₁₆	36	¾	¾	84
AWUF300316	2½	1,120	1,020	5	240/208	24	21	36	¾	¾	93
AWUF300516	2½	1,120	1,020	5	240/208	24	21	36	¾	¾	93
AWUF300816	2½	1,120	1,020	8	240/208	24	21	36	¾	¾	93
AWUF301016	2½	1,120	1,020	10	240/208	24	21	36	¾	¾	93
AWUF310516	1½ to 2½	950	600	5	240/208	24	21	36	¾	¾	96
AWUF310816	1½ to 2½	1,050	600	8	240/208	24	21	36	¾	¾	96
AWUF321016	1½ to 2½	1,050	600	10	240/208	24	21	36	¾	¾	96
AWUF360516	2½ to 3	1,110	1,030	5	240/208	24	21	36	¾	¾	96
AWUF360816	2½ to 3	1,110	1,030	8	240/208	24	21	36	¾	¾	96
AWUF361016	2½ to 3	1,110	1,030	10	240/208	24	21	36	¾	¾	96
AWUF370516	2½ to 3	1,110	1,030	5	240/208	24	21	36	¾	¾	96
AWUF370816	2½ to 3	1,110	1,030	8	240/208	24	21	36	¾	¾	96
AWUF371016	2½ to 3	1,110	1,030	10	240/208	24	21	36	¾	¾	96

* @ 0.3" ESP

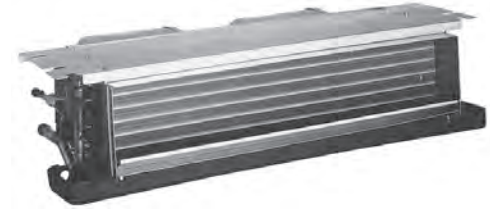
Goodman Manufacturing Company, L.P., reserves the right to discontinue or change at any time specifications or designs without notice or without incurring obligations.

ACNF — CEILING MOUNT

The Goodman® brand ACNF Electric Heat Air Handler is designed to be ceiling mounted. This unit features a check flowrater and direct-drive, resilient-mount, multi-speed motor. The ACNF has galvanized-steel construction and quiet operation.

Product Features

- Suitable for use with refrigerants R-410A and R-22
- Check flowrater for cooling and heat pump applications
- Direct-drive, resilient-mount, multi-speed motor
- Sequence-controlled and rust-resistant nickel chromium heating elements of 5, 6, 8 and 10 kW
- High-efficiency evaporator coil
- Quiet operation
- Available with and without heat
- AHRI Certified; ETL Listed
- Primary/secondary drain connection in a high-temperature plastic drain pan
- Factory-installed pull-type disconnect
- Easy service access



* Complete warranty details available from you local dealer or at www.goodmanmfg.com. To receive the 10-Year Parts Limited Warranty, online registration must be completed within 60 days of installation. Online registration is not required in California or Quebec.

MODEL	NOMINAL CAPACITY		ELECTRIC HEAT (kW)	VOLTAGE	DIMENSIONS			SERVICE VALVE		SHIP WEIGHT (LBS)
	COOLING (TONS)	CFM ¹ HIGH / LOW			W"	D"	H"	LIQUID	SUCTION	
ACNF180016	1½	710 / 590	0	208/230	37¼	21	10	⅜"	⅝"	56
ACNF180516	1½	710 / 540	5	208/230	37¼	21	10	⅜"	⅝"	59
ACNF180616	1½	710 / 590	6	208/230	37¼	21	10	⅜"	⅝"	59
ACNF180816	1½	710 / 590	8	208/230	37¼	21	10	⅜"	⅝"	59
ACNF240016	2	1,020 / 790	0	208/230	43¼	21	10	⅜"	¾"	66
ACNF240516	2	1,020 / 790	5	208/230	43¼	21	10	⅜"	¾"	69
ACNF240616	2	1,020 / 790	8	208/230	43¼	21	10	⅜"	¾"	69
ACNF240816	2	1,020 / 790	8	208/230	43¼	21	10	⅜"	¾"	69
ACNF241016	2	1,020 / 790	10	208/230	43¼	21	10	⅜"	¾"	69
ACNF300016	2½	1,150 / 880	0	208/230	49¼	21	10	⅜"	¾"	76
ACNF300516	2½	1,150 / 880	5	208/230	49¼	21	10	⅜"	¾"	79
ACNF300616	2½	1,150 / 880	5	208/230	49¼	21	10	⅜"	¾"	79
ACNF300816	2½	1,150 / 880	8	208/230	49¼	21	10	⅜"	¾"	79
ACNF301016	2½	1,150 / 880	10	208/230	49¼	21	10	⅜"	¾"	79

Goodman Manufacturing Company, L.P., reserves the right to discontinue, or change at any time, specifications or designs without notice or without incurring obligations.

CAUF — UNCASSED UPFLOW/DOWNFLOW

The Goodman® brand CAUF Uncased Upflow/Downflow Indoor Coil is made for split system air conditioners and heat pumps. This coil features rifled copper tubing and corrugated aluminum fins and rust-resistant, high-temperature, thermoplastic drain pan.



Product Features

- Suitable for use with R-410A and R-22 refrigerants
- Rust-resistant, high-temperature, thermoplastic drain pan features a low water-retention design
- Check flowrate for cooling and heat pump applications
- Rifled tubing and corrugated aluminum fins
- AHRI Certified; ETL Listed



* Complete warranty details available from your local dealer or at www.goodmanmfg.com. To receive the 10-Year Parts Limited Warranty, online registration must be completed within 60 days of installation and the unit must be

installed in conjunction with a new split system air conditioner or heat pump to which it is properly matched by the installer. Online registration is not required in California or Quebec.

MODEL	DIMENSIONS				NOMINAL TONS	COIL DIMENSIONS		CONNECTION		SHIP WEIGHT (LBS)
	W	D	H	A		W	H	LIQUID	SUCTION	
CAUF1824A6	13"	20½"	18⅞"	13"	1½ to 2	16¾"	14"	⅜"	¼"	20
CAUF1824B6	16½"	20½"	20"	13"	1½ to 2	16¾"	16"	⅜"	¼"	23
CAUF1824C6	20"	20½"	17⅞"	17"	1½ to 2	16¾"	14"	⅜"	¼"	27
CAUF3030A6	13"	20½"	20"	17"	2½	16¾"	16"	⅜"	¼"	23
CAUF3030B6	16½"	20½"	20"	17"	2½	16¾"	16"	⅜"	¼"	26
CAUF3030C6	20"	20½"	18⅞"	17"	2½	16¾"	16"	⅜"	¼"	29
CAUF3030D6	23"	20½"	17¾"	17"	2½	16¾"	16"	⅜"	¼"	32
CAUF3131B6	16½"	20½"	19 ¹⁵ / ₁₆ "	17"	2½	16¾"	18"	⅜"	¼"	28
CAUF3131C6	20"	20½"	24⅞"	17"	2½	16¾"	20"	⅜"	⅞"	31
CAUF3636A6	13"	20½"	19 ⁹ / ₁₆ "	17"	3	16¾"	16"	⅜"	⅞"	29
CAUF3636B6	16½"	20½"	19⅜"	17"	3	16¾"	16"	⅜"	⅞"	32
CAUF3636C6	20"	20½"	19⅞"	17"	3	16¾"	16"	⅜"	⅞"	35
CAUF3636D6	23"	20½"	19⅞"	17"	3	16¾"	16"	⅜"	⅞"	38
CAUF3642C6	20"	20½"	19 ¹⁵ / ₁₆ "	17"	3 to 3½	16¾"	18"	⅜"	⅞"	39
CAUF3642D6	23"	20½"	19⅞"	17"	3 to 3½	16¾"	18"	⅜"	⅞"	42
CAUF3743C6	20"	20½"	28 ⁵ / ₁₆ "	25"	3 to 3½	16¾"	26"	⅜"	⅞"	46
CAUF3743D6	23"	20½"	28⅞"	25"	3 to 3½	16¾"	26"	⅜"	⅞"	49
CAUF4860C6	20"	20½"	28 ⁵ / ₁₆ "	25"	4 to 5	16¾"	26"	⅜"	⅞"	48
CAUF4860D6	23"	20½"	28⅞"	25"	4 to 5	16¾"	26"	⅜"	⅞"	51
CAUF4961C6	20"	20½"	28 ⁵ / ₁₆ "	25"	4 to 5	16¾"	26"	⅜"	⅞"	54
CAUF4961D6	23"	20½"	28⅞"	25"	4 to 5	16¾"	26"	⅜"	⅞"	58

Goodman Manufacturing Company, L.P., reserves the right to discontinue, or change at any time, specifications or designs without notice or without incurring obligations.

CAPF — PAINTED CASED UPFLOW/DOWNFLOW

The Goodman® brand CAPF Cased Upflow/Downflow Indoor Coil is made for split system air conditioners and heat pumps. This unit features rifled copper tubing and corrugated aluminum fin coils and rust-resistant, high-temperature, thermoplastic drain pan. The CAPF is painted Architectural Gray.

Product Features

- Suitable for use with R-410A and R-22 refrigerants
- Rust-resistant, high-temperature, thermoplastic drain pan features a low water-retention design
- Check flowrate for cooling and heat pump applications
- Rifled tubing and corrugated aluminum fin coils
- Foil-faced insulation
- AHRI Certified; ETL Listed
- High-quality post-paint cabinet
- Split-seam front for easy access



* Complete warranty details available from your local dealer or at www.goodmanmfg.com. To receive the 10-Year Parts Limited Warranty, online registration must be completed within 60 days of installation and the unit must be installed in conjunction with a new split system air conditioner or heat pump to which it is properly matched by the installer. Online registration is not required in California or Quebec.

MODEL	DIMENSIONS			PLENUM OPENING		COIL DIMENSIONS		NOMINAL TONS	CONNECTION		SHIP WEIGHT (LBS)
	W	D	H	W	H	W	H		LIQUID	SUCTION	
CAPF1824A6	14"	21"	18"	13"	17"	16¼"	14"	1½ to 2	¾"	¾"	35
CAPF1824B6	17½"	21"	18"	16½"	17"	16¼"	16"	1½ to 2	¾"	¾"	40
CAPF1824C6	21"	21"	22"	20"	21"	16¼"	14"	1½ to 2	¾"	¾"	44
CAPF3030A6	14"	21"	22"	13"	21"	16¼"	16"	2½	¾"	¾"	39
CAPF3030B6	17½"	21"	22"	16½"	21"	16¼"	16"	2½	¾"	¾"	43
CAPF3030C6	21"	21"	22"	20"	21"	16¼"	16"	2½	¾"	¾"	47
CAPF3030D6	24½"	21"	22"	23½"	21"	16¼"	16"	2½	¾"	¾"	52
CAPF3131B6	17½"	21"	22"	16½"	21"	16¼"	18"	2½	¾"	¾"	45
CAPF3131C6	21"	21"	26"	20"	25"	16¼"	20"	2½	¾"	¾"	50
CAPF3636A6	14"	21"	22"	13"	21"	16¼"	16"	3	¾"	¾"	46
CAPF3636B6	17½"	21"	22"	16½"	21"	16¼"	16"	3	¾"	¾"	50
CAPF3636C6	21"	21"	22"	20"	21"	16¼"	16"	3	¾"	¾"	57
CAPF3636D6	24½"	21"	22"	23½"	21"	16¼"	16"	3	¾"	¾"	65
CAPF3642C6	21"	21"	22"	20"	21"	16¼"	18"	3 to 3½	¾"	¾"	64
CAPF3642D6	24½"	21"	22"	23½"	21"	16¼"	18"	3 to 3½	¾"	¾"	71
CAPF3743C6	21"	21"	30"	20"	29"	16¼"	26"	3 to 3½	¾"	¾"	71
CAPF3743D6	24½"	21"	30"	23½"	29"	16¼"	26"	3 to 3½	¾"	¾"	78
CAPF4860C6	21"	21"	30"	20"	29"	16¼"	26"	4 to 5	¾"	¾"	73
CAPF4860D6	24½"	21"	30"	23½"	29"	16¼"	26"	4 to 5	¾"	¾"	80
CAPF4961C6	21"	21"	30"	20"	29"	16¼"	26"	4 to 5	¾"	¾"	80
CAPF4961D6	24½"	21"	30"	23½"	29"	16¼"	26"	4 to 5	¾"	¾"	87

Goodman Manufacturing Company, L.P., reserves the right to discontinue, or change at any time, specifications or designs without notice or without incurring obligations.

CHPF — PAINTED CASED HORIZONTAL “A”

The Goodman® brand CHPF Cased Horizontal “A” Coil is made for split system air conditioners and heat pumps. Each coil is made of quality galvanized steel with a painted, leather-grain-embossed finish. This coil is painted Architectural Gray.



Product Features

- Suitable for use with R-410A and R-22 refrigerants
- Rust-resistant, high-temperature, thermoplastic drain pan features a low water-retention design
- Check flowrate for cooling and heat pump applications
- Riffled aluminum tubing and corrugated aluminum fin coils
- Foil-faced insulation
- AHRI Certified; ETL Listed
- High-quality post-paint cabinet
- Split-seam front for easy access



* Complete warranty details available from your local dealer or at www.goodmanmfg.com. To receive the 10-Year Parts Limited Warranty, online registration must be completed within 60 days of installation and the unit must be

installed in conjunction with a new split system air conditioner or heat pump to which it is properly matched by the installer. Online registration is not required in California or Quebec.

MODEL	DIMENSIONS (CABINET)			PLENUM OPENING		NOMINAL TONS	COIL DIMENSIONS		CONNECTION		SHIP WEIGHT (LBS)
	W	D	H	W	H		W	H	LIQUID	SUCTION	
CHPF1824A6	21 $\frac{1}{8}$ "	26"	14"	19"	13"	1 $\frac{1}{2}$ to 2	20 $\frac{1}{8}$ "	12"	$\frac{3}{8}$ "	$\frac{3}{4}$ "	36
CHPF2430B6	21 $\frac{1}{8}$ "	26"	17 $\frac{1}{2}$ "	19"	16 $\frac{1}{2}$ "	2 to 2 $\frac{1}{2}$	20 $\frac{1}{8}$ "	16"	$\frac{3}{8}$ "	$\frac{3}{4}$ "	55
CHPF3636B6	21 $\frac{1}{8}$ "	26"	17 $\frac{1}{2}$ "	19"	16 $\frac{1}{2}$ "	3	19 $\frac{1}{2}$ "	16"	$\frac{3}{8}$ "	$\frac{3}{4}$ "	50
CHPF3642C6	21 $\frac{1}{8}$ "	26"	21"	19"	20"	3 to 3 $\frac{1}{2}$	19 $\frac{1}{2}$ "	16"	$\frac{3}{8}$ "	$\frac{3}{4}$ "	60
CHPF3642D6	21 $\frac{1}{8}$ "	26"	24 $\frac{1}{2}$ "	19"	23 $\frac{1}{2}$ "	3 to 3 $\frac{1}{2}$	19 $\frac{1}{2}$ "	22"	$\frac{3}{8}$ "	$\frac{7}{8}$ "	60
CHPF3743C6	21 $\frac{1}{8}$ "	26"	21"	19"	20"	3 to 3 $\frac{1}{2}$	19 $\frac{1}{2}$ "	16"	$\frac{3}{8}$ "	$\frac{7}{8}$ "	63
CHPF3743D6	21 $\frac{1}{8}$ "	26"	24 $\frac{1}{2}$ "	19"	23 $\frac{1}{2}$ "	3 to 3 $\frac{1}{2}$	19 $\frac{1}{2}$ "	22"	$\frac{3}{8}$ "	$\frac{7}{8}$ "	63
CHPF4860D6	21 $\frac{1}{8}$ "	26"	24 $\frac{1}{2}$ "	19"	23 $\frac{1}{2}$ "	4 to 5	19 $\frac{1}{2}$ "	22"	$\frac{3}{8}$ "	$\frac{7}{8}$ "	68

Goodman Manufacturing Company, L.P., reserves the right to discontinue, or change at any time, specifications or designs without notice or without incurring obligations.

CSCF — HORIZONTAL SLAB EVAPORATOR INDOOR COIL

The Goodman® brand CSCF Horizontal Slab Evaporator Coil is made for split system air conditioners and heat pumps. This unit features a check flowrate expansion device and rust-resistant, high-temperature, thermoplastic drain pan. Each coil's cabinet has a quality, galvanized-steel finish.

Product Features

- Suitable for use with R-410A and R-22 refrigerants
- Rust-resistant, high-temperature, thermoplastic drain pan with a secondary drain connection
- Check flowrate for cooling and heat pump applications
- Rified tubing and corrugated aluminum fin coils
- Compact, versatile, right or left horizontal position
- Copper sweat connections
- AHRI Certified; ETL Listed



* Complete warranty details available from your local dealer or at www.goodmanmfg.com. To receive the 10-Year Parts Limited Warranty, online registration must be completed within 60 days of installation and the unit must be installed in conjunction with a new split system air conditioner or heat pump to which it is properly matched by the installer. Online registration is not required in California or Quebec.

MODEL	DIMENSIONS (CABINET)			PLENUM OPENING		NOMINAL TONS	COIL DIMENSIONS		CONNECTION		SHIP WEIGHT (LBS)
	W	D	H	W	H		W	H	LIQUID	SUCTION	
CSCF1824N6	25½"	12"	25"	16"	21"	1½ to 2	19¾"	24"	¾"	¾"	42
CSCF3036N6	33½"	12"	25"	24"	21"	2½ to 3	28"	24"	¾"	7⁄8"	53
CSCF3642N6	39½"	12"	25"	30"	21"	3 to 3½	34"	24"	¾"	7⁄8"	58
CSCF4860N6	39½"	12"	25"	30"	21"	4 to 5	34"	24"	¾"	7⁄8"	65

Goodman Manufacturing Company, L.P., reserves the right to discontinue, or change at any time, specifications or designs without notice or without incurring obligations.

DMH900 — WHOLE-HOUSE HEPA AIR CLEANER

The Goodman® brand DMH900 Whole-House Air Cleaner uses HEPA, UVC germicidal lights (non-ozone producing) and CinQuartz® Photo-Catalytic Oxidation to help filter and sterilize the air. This unit removes and destroys allergens and atmospheric dust, as well as biological and chemical contaminants and odors. The DMH900 can be mounted in a variety of positions: duct-mounted, collar-mounted, or free-standing.



* Complete warranty details available from you local dealer or at www.goodmanmfg.com.

Product Features

- Exclusive US market distributor
- 99.97% efficient at removing particles down to 0.3 micron
- Carbon Prefilter protects the HEPA filter while removing odors, lint, hair and larger particles
- 99.97% HEPA Media Filter removes particles 0.3 micron (1/84,000 of an inch) and larger
- Two UVC Germicidal Lights enclosed in an anodized UV reflector to intensify UV rays
- The UVC light and CinQuartz® Photo-Catalytic Oxidation (PCO) filter decompose organic materials into basic molecules such as H₂O and CO₂.
- Carbon/Potassium Permanganate Final Filter for removal of organic compounds and light gases
- Motor delivers 250 CFM of air, without adding static pressure to the HVAC system
- Versatile installation — duct-mounted, collar-mounted, or free-standing
- One-piece steel cabinet wrap
- Powder-coat paint finish
- Pre-punched openings and mounting template for easier installation

SPECIFICATIONS	DMH900 (ENGLISH UNITS [METRIC UNITS])
Airflow	250 CFM (425 m ³ /hr)
Carbon Pre-filter	Replace every 3-6 months
Long-Life, 99.97% HEPA Media	40 ft ² – Replace every 2-3 years [3.7 m ² – Replace every 2-3 years]
Germicidal UV Light (2 Bulbs)	Replace every 13,000 hours or 2 years
CinQuartz® Substrate PCO Filter	Replace every 13,000 hours or 2 years
Carbon Final Filter	Replace every year
Cabinet Dimensions: H x W x D	29½" x 16¼" x 12¼" [74.9 x 41.3 x 32.4 cm]
Intake Duct Fitting	14½" x 3¾" or 8" (dia) [36.8 x 9.5 cm or 20.3 cm (dia)]
Outflow Duct Fitting	14½" x 4½" or 8" (dia) [36.8 x 11.1 cm or 20.3 cm (dia)]
Input Voltage	120 V/60 Hz
Power Consumption	200 watts
Power Cord	10.0 ft. [3.05 m]
Unit Weight	45 lbs [20.4 Kg]

Goodman Manufacturing Company, L.P., reserves the right to discontinue, or change at any time, specifications or designs without notice or without incurring obligations.

GHEPA WHOLE-HOUSE HEPA AIR CLEANER



* Complete warranty details available from you local dealer or at www.goodmanmfg.com.

Product Features

- No system airflow restrictions
- Activated carbon pre-filter removes odors
- Certified true HEPA (High-Efficiency Particulate Air) filter is 99.97% efficient at removing particles down to 0.3 micron
- Carbon VOC (Volatile Organic Compound) after-filter (included with Model GHEPA 550-3)
- Easy-to-change filters
- Powerful motor delivers between 245-560 CFM of filtered air
- Plug-in power cord
- Versatile installation: free-standing, ceiling-mounted, or wall-mounted
- Heavy-gauge steel cabinet with powder-paint finish

MODEL	CFM* [M ³ /H]	AIR CHANGES / DAY		CABINET DIMENSIONS			INTAKE DUCT	OUTFLOW DUCT	POWER			SHIP WGT. (LBS) [KG]
		1,500 FT ²	2,500 FT ²	W [MM]	D [MM]	H [MM]	FITTING DIA. [MM]	FITTING DIA. [MM]	VOLTS	HZ	WATTS	
GHEPA350	245 [416]	30	18	18¾" [464]	18¾" [464]	19¾" [489]	8" [203]	6" [152]	120	60	70	38 [17.2]
GHEPA450	330 [561]	40	24	18" [457]	18" [457]	24½" [622]	8" [203]	6" [152]	120	60	125	51 [23.1]
GHEPA550	560 [951]	67	41	21½" [546]	20½" [521]	28" [711]	12" [305]	8" [203]	120	60	215	88 [40.0]
GHEPA650	540 [917]	65	39	18" [457]	18" [457]	30½" [775]	12" [305]	8" [203]	120	60	215	57 [25.9]

* With all standard filters installed [] Designates metric equivalents

Goodman Manufacturing Company, L.P., reserves the right to discontinue, or change at any time, specifications or designs without notice or without incurring obligations.

GDMHEPA — WHOLE-HOUSE HEPA AIR CLEANER

Product Features

- Certified true HEPA (High-Efficiency Particulate Air) filter
- MERV 11 pre-filter removes particles before they enter HEPA filter
- Activated carbon pre-filter removes odors
- 99.97% HEPA media filter removes particles down to 0.3 micron
- Powerful motor delivers 320 CFM of air without adding static pressure to HVAC system
- Plug-in power cord
- Versatile installation: free-standing, duct-mounted, or collar-mounted
- Heavy-gauge steel cabinet with powder-paint finish
- Corrosion-resistant cabinet provides rigid installation and durability



* Complete warranty details available from you local dealer or at www.goodmanmfg.com.

MODEL	CFM* [M ³ /H]	AIR CHANGES / DAY		CABINET DIMENSIONS			INTAKE DUCT	OUTFLOW DUCT	POWER			SHIP WGT. (LBS) [KG]
		1,500 FT ²	2,500 FT ²	W [MM]	D [MM]	H [MM]	FITTING DIA. [MM]	FITTING DIA. [MM]	VOLTS	HZ	WATTS	
GDMHEPA400	320 [544]	39	29	16¾" [413]	12¾" [324]	20¾" [511]	8" [203]	8" [203]	120	60	125	38 [17.2]

* With all standard filters installed [] Designates metric equivalents

Goodman Manufacturing Company, L.P., reserves the right to discontinue, or change at any time, specifications or designs without notice or without incurring obligations.

GGM — HIGH-EFFICIENCY GRILLE-MOUNT ELECTRONIC AIR CLEANER



* Complete warranty details available from you local dealer or at www.goodmanmfg.com.

Product Features

- Pre-filters (2) are constructed of aluminum mesh to help prevent lint and large particles from entering the collecting cells
- Collecting cells (2) are constructed of heavy-gauge aluminum for durability and ease of maintenance
- Plastic intake grille is easy to wipe clean
- Hinged, swing-out door allows easy access to filters
- Automatic interlock switch disconnects power when door is opened
- Air-proving switch allows for quick wiring; automatically cycles air cleaner on/off with the system fan
- Performance indicator light ensures air cleaner is operating properly at a glance
- Reliable solid-state power board is uniquely equipped with a variable resistor (potentiometer) to adjust high-voltage output if necessary
- Optional carbon pre-filter (P/N 1856-3 3 pack)

MODEL	CFM [M ³ /H]	DUCT SIZE [MM]	CABINET DIMENSIONS			POWER			WEIGHT (LBS [KG])
			W	D	H	VOLTS	HZ	WATTS	
GGM20AS-A	Up to 2,000 [up to 3,398]	22" x 29 1/2" [559 x 739]	31 3/8" [559]	7" [178]	24 3/8" [620]	120	60	30	38 [17.5]

[] Designates metric equivalents

GSASD — HIGH-EFFICIENCY ELECTRONIC AIR CLEANER

Product Features

- MERV 16 Rating
- Lifetime filter system never needs Replacing
- Filters wash clean
- Electronically removes air pollutants down to 0.01 micron
- Activated carbon filters (3) remove odors
- Washable pre-filters (2) remove lint, hair, and large particles
- Dual indicator lights show unit operation at a glance
- Air-proving switch cycles the air cleaner on/off with the system fan
- Heavy-gauge galvanized-steel cabinet
- Vertical or horizontal installation
- Durable powder-coat paint finish on cabinet



* Complete warranty details available from you local dealer or at www.goodmanmfg.com.

MODEL	CFM [M ³ /H]	DUCT SIZE [MM]	CABINET DIMENSIONS			POWER			WEIGHT (LBS [KG])
			W	D	H	VOLTS	HZ	WATTS	
GSASD-10	Up to 1,200 [up to 2,039]	16" x 20" [405 x 508]	21" [533]	7 1/2" [191]	23 3/4" [603]	120	60	30	28 [12.9]
GSASD-11	Up to 1,400 [up to 2,379]	16" x 25" [405 x 635]	21" [533]	7 1/2" [191]	26 1/2" [673]	120	60	30	30 [13.5]
GSASD-12	Up to 1,400 [up to 2,379]	20" x 20" [508 x 508]	25 1/2" [638]	7 1/2" [191]	21 1/2" [552]	120	60	30	33 [15.3]
GSASD-18	Up to 2,000 [up to 3,398]	20" x 25" [508 x 635]	25 1/2" [638]	7 1/2" [191]	26 1/2" [673]	120	60	30	38 [17.5]

[] Designates metric equivalents

Goodman Manufacturing Company, L.P., reserves the right to discontinue, or change at any time, specifications or designs without notice or without incurring obligations.

G13MU — HIGH-EFFICIENCY MERV 14+ RETROFIT MEDIA AIR CLEANER

Product Features

- High-efficiency Media Filter removes airborne contaminants down to 0.3 micron
- Rated up to MERV 15
- Extra deep, 5¼", 26-pleat filter contains more media material than other filters on the market.
- User-friendly, easy-to-change filter cartridge
- Reversible airflow
- Easily upgrades to the new Goodman "D Series" High-Efficiency Electronic Air Cleaner
- Heavy-gauge galvanized-steel cabinet with powder-paint finish
- Vertical or horizontal installation
- Optional carbon pre-filter available (3-pack)



* Complete warranty details available from you local dealer or at www.goodmanmfg.com.

MODEL	CFM [M ³ /H]	DUCT SIZE H x D [cm]	CABINET DIMENSIONS			MERV RATING	WEIGHT (LBS [KG])
			H	W	D		
G13MU1625	Up to 1,400 [up to 2,379]	13 5/8" x 24 1/8" [34.6 x 61.2]	17 3/8" [44.2]	7 1/2" [19.1]	26 3/8" [67.3]	14+	18 [8.2]
G13MU2025	Up to 2,000 [up to 3,398]	18" x 23 1/4" [45.7 x 59.1]	22 3/8" [56.6]	7 1/2" [19.1]	26 3/8" [67.3]	14+	20 [9.1]

[] Designates metric equivalents

GMU — HIGH-EFFICIENCY MERV 11 RETROFIT MEDIA AIR CLEANER

Product Features

- High-efficiency MERV 11 Media Filter helps remove household particles down to 0.3 micron
- Carbon filters (optional) remove odors
- Easy-to-change filter (see Product Specifications for filter model numbers)
- Heavy-gauge galvanized-steel cabinet with powder-paint finish on door
- Vertical or horizontal installation
- Reversible airflow; mounts in any position
- Optional carbon pre-filter available (3-pack)



* Complete warranty details available from you local dealer or at www.goodmanmfg.com.

MODEL	CFM [M ³ /H]	DUCT SIZE H x D [MM]	DIMENSIONS [MM]			MERV RATING	WEIGHT (LBS [KG])
			H	W	D		
GMU1620	< 1,200 [2,039]	13 3/8" x 20 3/4" [333 x 527]	17" [432]	7 1/2" [191]	23 3/4" [603]	11	17 [7.7]
GMU1625	< 1,400 [2,379]	13 3/8" x 24" [333 x 610]	17" [432]	7 1/2" [191]	26 1/2" [673]	11	18 [8.2]
GMU2020	< 1,400 [2,379]	18" x 18 3/4" [457 x 476]	22" [559]	7 1/2" [191]	21 1/4" [552]	11	19 [8.6]
GMU2025	< 2,000 [3,398]	18" x 23 1/2" [457 x 597]	22" [559]	7 1/2" [191]	26 1/2" [673]	11	20 [9.1]

[] Designates metric equivalents

Goodman Manufacturing Company, L.P., reserves the right to discontinue, or change at any time, specifications or designs without notice or without incurring obligations.

GRAM — HIGH-EFFICIENCY RIGHT-ANGLE MEDIA AIR CLEANER



* Complete warranty details available from you local dealer or at www.goodmanmfg.com.

Product Features

- High-efficiency MERV 11 Media Filter removes atmospheric and household particles down to 0.3 micron
- Two access doors allow for reversible airflow and easy maintenance
- User-friendly, easy-to-change filter means no fussing with complicated combs or brackets
- Adjustable inlet duct opening replaces need for field-forming transition, significantly reducing installation time

MODEL	CFM [M ³ /H]	INTAKE DIMENSIONS D x W [MM]	OUTLET DIMENSIONS H x W [MM]	DIMENSIONS [MM]			MERV RATING	WEIGHT (LBS [KG])
				H	W	D		
GRAM-2000	< 2,000 [3,398]	8" x 24" [203 x 610] 10" x 24" [254 x 610] 11" x 24" [279 x 610]	14 ¼" x 23 ½" [362 x 591]	23 ½" [597]	16" [40.6]	26 ¾" [679]	11	34 [15.4]

[] Designates metric equivalents

Goodman Manufacturing Company, L.P., reserves the right to discontinue, or change at any time, specifications or designs without notice or without incurring obligations.

GBB — HIGH-EFFICIENCY VALUE SERIES MEDIA AIR CLEANER

Product Features

- High-efficiency MERV 11 Media Filter helps remove household particles down to 0.3 micron
- User-friendly, easy-to-change filter
- Reversible airflow; mounts in any position
- Heavy-gauge galvanized-steel cabinet with powder-paint finish
- Snap-on door that provides easy filter access



* Complete warranty details available from you local dealer or at www.goodmanmfg.com.

MODEL	CFM [M ³ /H]	INTAKE DIMENSIONS H x D [MM]	DIMENSIONS [MM]			MERV RATING	WEIGHT (LBS [KG])
			H	W	D		
GBB1625	< 1,400 [2,379]	13 ¾" x 24" [346 x 610]	17" [432]	7½" [190]	26" [660]	11	18 [8.2]
GBB2025	< 2,000 [3,398]	18 ¼" x 23 ½" [464 x 591]	22" [559]	7½" [190]	26" [660]	11	20 [9.1]

[] Designates metric equivalents

Goodman Manufacturing Company, L.P., reserves the right to discontinue, or change at any time, specifications or designs without notice or without incurring obligations.

UVX — ULTRAVIOLET AIR AND OBJECT PURIFIERS

The Goodman® brand UVX Ultraviolet Air and Object Purifiers are ideal for homes, offices, lounges, smoking rooms, daycare centers and any location where clean air is desired.



Product Features for UVX-DMR+ Air Purifier

- Large, high-intensity, self-cleaning (no maintenance), quartz germicidal UVC and UVV oxidizing lamp
- UVC attacks micro-organisms on a molecular level deactivating and destroying the contaminant
- UVV oxidizes chemicals and odors into non-offensive byproducts
- Three-year lamp life
- Three-inch high resolution LCD backlit display used for status, maintenance, and service
- 120/240V auto-sensing ballast
- Microprocessor-controlled thermistor for automatic operation
- Low-profile 5/8" slim fit face
- CSA & C/US certified



* Complete warranty details available from you local dealer or at www.goodmanmfg.com.



Product Features for UVX-PR12 / UVX-PR18 Object Purifiers

- Reduces bacteria, mold, and virus growth
- Patent-pending, aluminum parabolic reflector directs and intensifies all UV energy to the desired area, ensuring a coil free of microbial growth
- Parabolic reflector can be rotated 360 degrees around the lamp
- Multi-Installation — installed above or inside the A-coil, keeps it free of biological contaminants, including mold and fungus
- Parabolic reflector is designed to protect the drain pan from UV degradation
- Lamp available in 12" and 18" lengths
- High-intensity, 19mm quartz germicidal UVC lamp
- Ultra-bright LED "Smart Lamp System" visual display
- CSA & C/US certified

MODEL	DESCRIPTION	HOUSE SIZE [M ²]	UV INTENSITY INSIDE REFLECTOR*	POWER		DIMENSIONS			WEIGHT (LBS [KG])
				VOLTS	HZ	W [MM]	D [MM]	H [MM]	
UVX-DM4000	Air Purifier/ Duct-mounted	<4,000 ft ² [<371.6]	16,479	110 / 220	50 / 60	7" [178]	12" [305]	7" [178]	8 [3.6]
UVX-PR12	Object Purifier/ Probe Style	N/A	N/A	110 / 220	50 / 60	7" [178]	12" [305]	7" [178]	3 [1.4]
UVX-PR18	Object Purifier/ Probe Style	N/A	N/A	110 / 220	50 / 60	7" [178]	18" [457]	7" [178]	3 [1.4]

* microwatts per/cm²

[] Designates metric equivalents

Goodman Manufacturing Company, L.P., reserves the right to discontinue, or change at any time, specifications or designs without notice or without incurring obligations.

G1EAC — 1" CHARGED MEDIA ELECTRONIC AIR CLEANER

The Goodman® brand G1EAC 1" Charged-Media Electronic Air Cleaner provides a 24-volt polarized charge on the media pads to capture and remove airborne particles. Contributing to the air cleaner's reliable operation is its carbon-graphite center charging screen, which is permanently mounted to the air cleaner frame. Attached to each of the frame's four corners, internal center screen spacers are open-faced to maximize airflow. For added durability, a one-piece, injection-molded power head is "capped" and sealed to be watertight.



* Complete warranty details available from you local dealer or at www.goodmanmfg.com.

Product Features

- Fits easily into any one-inch filter opening
- Does not produce hazardous ozone or positive ions
- Quiet operation
- Fully electronic, reliable, high-efficiency carbon-graphite center screen removes particles as small as 0.01 micron
- Uses little electrical current to avoid system overload
- 2-watt energy usage – less than other electronic models
- Designed to operate with constant power or with the system's fan to permit reliable, long-term performance
- Independently tested and certified
- MERV 10-Rated Efficiency (ASHRAE Standard 52.2)
- Replacement media pads feature high dust-holding capacities and low-static pressure curves
- Easy to install, maintain, and service
- Fits all central HVAC residential systems
- Corrosion-resistant construction
- Open-face design maintains low static pressure

MODEL	PRESSURE DROP*	POWER			DIMENSIONS			NET/ SHIP WEIGHT (LBS [KG])	
		VOLTS	AMPS	WATTS	H [MM]	W [MM]	D [MM]		
G1EAC-1224	.17"	24	0.064	2	24" [610]	12" [305]	1" [254]	2 [0.9] / 3 [1.4]	
G1EAC-1420					20" [508]	14" [356]			
G1EAC-1424					24" [610]	14" [356]			
G1EAC-1425					25" [635]	14" [356]			
G1EAC-1430					30" [762]	14" [356]			
G1EAC-1520					20" [508]	15" [381]			
G1EAC-1620					20" [508]	16" [406]			
G1EAC-1624					24" [610]	16" [406]			
G1EAC-1625					25" [635]	16" [406]			
G1EAC-1820					20" [508]	18" [457]			
G1EAC-2020					20" [508]	20" [508]			
G1EAC-2024					24" [610]	20" [508]			
G1EAC-2025					25" [635]	20" [508]			
G1EAC-2424					24" [610]	24" [610]			
G1EAC-2030					30" [762]	20" [508]			
G1EAC-2036					36" [914]	20" [508]			
G1EAC-CUSTOM					All Sizes up to 700 In. ² [17,780 mm ²]				

* @ 300 FPM (W.G.)

[] Designates metric equivalents

Goodman Manufacturing Company, L.P., reserves the right to discontinue, or change at any time, specifications or designs without notice or without incurring obligations.

HRV / ERV — HEAT/ENERGY RECOVERY VENTILATORS

The Goodman® brand HRV/ERV Heat/Energy Recovery Ventilators are easy to install and service. The fully insulated cabinet with 1" high-density, polystyrene foam insulation prevents condensation and meets the requirements of the UL 94 HF. The unit is constructed of 22-gauge galvanized steel with a powder-coat paint finish. (HRV-150 and HRV-150D are 24-gauge.)

Product Features

- Two German-manufactured, factory-balanced EBM™ external rotor motors with backward-curved blades
- Motors have permanently lubricated, sealed bearings
- Energy-efficient, aluminum heat recovery ventilator core and enthalpy energy recovery ventilator core are configured for efficient cross-flow ventilation and are designed to withstand extreme temperature variations (HRV-300D has two cores)
- Washable, electrostatic, panel-type air filters (2)
- External, three-position (Low/Standby/Medium) rocker switch offers continuous ventilation
- Screw-type dial on electrical box allows supply air to be adjusted to match exhaust airflow and uses the “TRUE” motor adjustment feature (HRV-150D, HRV-200D only)
- Optional remote controls provide easy operation
- Advanced Defrost Cycle (HRV Series)
- State-of-the-art control boards provide easy connection to existing HVAC equipment
- Unit can be serviced through an easy-access, latched door
- Core conveniently slides out on channel guide system
- Easy maintenance via service light indicator and external electrical box
- Unit may be installed using the factory-supplied installation kit that includes mounting bolts or chains and hooks for suspension



* Complete warranty details available from your local dealer or at www.goodmanmfg.com.

MODEL	RECOVERY VENTILATOR TYPE	CFM [M ³ /H]	VOLTS / AMPS / WATTS	DIMENSIONS [MM]			SUPPLY/ EXHAUST DIAMETER	VENT DEPTH		CORE SIZE [MM]	FILTER SIZE [MM]	WEIGHT (LBS) [KG]
				W"	D"	H"		EXTERNAL	INTERNAL			
HRV-150	Heat	123 [209]	120 / 1.5 / 150	17% [441]	23½ [597]	16% [410]	6" [152]	2¼" [57]	2¼" [57]	9" x 9" x 15" [229 x 229 x 381]	8½" x 15" x ¾" [216 x 381 x 32]	49 [22.2]
HRV-200	Heat	168 [285]	120 / 1.9 / 150	17% [441]	27% [708]	20% [520]	6" [152]	2¼" [57]	2¼" [57]	12" x 12" x 15" [305 x 305 x 381]	11¼" x 15" x ¾" [298 x 381 x 32]	66 [30]
HRV-150D	Heat w/ Recirculation	123 [209]	120 / 1.5 / 150	17% [441]	23½ [597]	17% [441]	6" [152]	2¼" [57]	2¼" [57]	9" x 9" x 15" [229 x 229 x 381]	8½" x 15" x ¾" [216 x 381 x 32]	51 [23.2]
HRV-200D	Heat w/ Recirculation	168 [285]	120 / 1.9 / 150	17% [441]	27% [708]	20% [520]	6" [152]	2¼" [57]	2¼" [57]	12" x 12" x 15" [305 x 305 x 381]	11¼" x 15" x ¾" [298 x 381 x 32]	66 [30]
HRV-300D	Heat w/ Recirculation	247 [420]	120 / 2.7 / 150	17% [441]	50% [1292]	22½ [565]	6" [152]	2¼" [57]	2¼" [57]	12" x 12" x 15" [305 x 305 x 381]	11¼" x 15" x ¾" [298 x 381 x 32]	125 [56.8]
ERV-150	Energy	135 [229]	120 / 1.5 / 150	17% [441]	23½ [597]	16% [413]	6" [152]	2¼" [57]	2¼" [57]	9" x 9" x 15" [229 x 229 x 381]	8½" x 15" x ¾" [216 x 381 x 32]	49 [22.2]
ERV-200	Energy	155 [263]	120 / 1.9 / 150	17% [441]	27% [708]	20% [520]	6" [152]	2¼" [57]	2¼" [57]	12" x 12" x 15" [305 x 305 x 381]	11¼" x 15" x ¾" [298 x 381 x 32]	66 [30]

[] Designates metric equivalents

Goodman Manufacturing Company, L.P., reserves the right to discontinue, or change at any time, specifications or designs without notice or without incurring obligations.

HUM — FLOW-THROUGH AND BYPASS HUMIDIFIERS

The Goodman® brand HUM Bypass and Fan-Powered High-Capacity Humidifiers are a good choice for homes with warm-air heating systems. The durable thermoplastic cabinet resists rust, corrosion, and warping; its UV-resistant plastic is Architectural Gray.



Product Features

- Designed to fit today's narrower plenums, as narrow as 10" (HUM-SFTBP) and 14" (HUM-LFTBP, HUM-FP)
- Reversible side panels with unique snap-lock fittings permit easy change; left-side or right-side bypass installation (HUM-SFTBP, HUM-LFTBP)
- Ideal for installations where the return air plenum is not easily accessible (HUM-FP)
- Summer Shut-off Damper reduces bypass air through the humidifier during the summer months (HUM-SFTBP, HUM-LFTBP)
- Improved wicking and water distribution system accommodates non-level plenums
- Low profile makes unit ideal where space is limited



* Complete warranty details available from you local dealer or at www.goodmanmfg.com.

MODEL	DESCRIPTION	VOLTAGE	MOISTURE OUTPUT CAPACITY			WEIGHT (LBS.) [KG]
			LBS. [KG] / HOUR	GALS. [LITERS] / HOUR @ 120 °F (GPH)	GALS. [LITERS] / DAY (GPD)	
HUM-SFTBP	Small, Flow-Thru Bypass	220	4.84 [2.2]	0.58 [2.2]	14 [53]	10 [4.5]
HUM-LFTBP	Large, Flow-Thru Bypass	220	6.26 [2.8]	0.75 [2.8]	18 [68]	11 [5.0]
HUM-FP	Fan-Powered Flow-Thru	110	6.6 [3.0]	0.79 [3.0]	19 [72]	15 [6.8]

[] Designates metric equivalents

Goodman Manufacturing Company, L.P., reserves the right to discontinue, or change at any time, specifications or designs without notice or without incurring obligations.

COMFORTNET™ COMMUNICATING CONTROL— FOR RESIDENTIAL APPLICATIONS

The ComfortNet® brand CTK01AA digital communicating control works with Goodman brand ComfortNet-compatible heating and cooling systems.



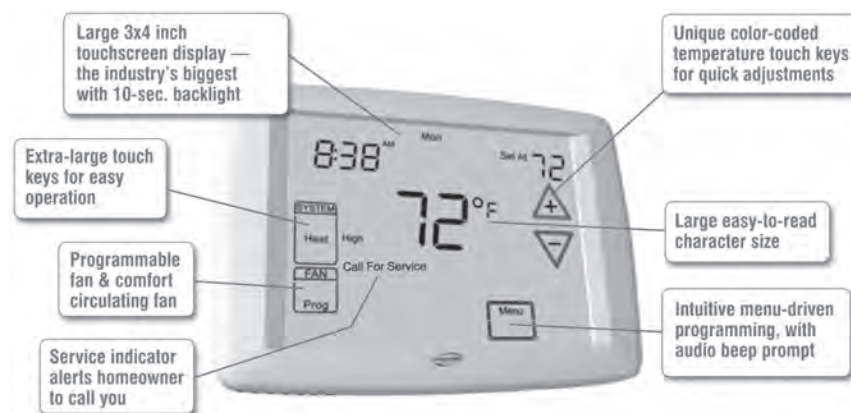
* Complete warranty details available from your local dealer or at www.goodmanmfg.com. To receive the 10-Year Control Limited Warranty, the control must be installed in conjunction with a new furnace or air handler containing a communicating system that is compatible with the control and, if that furnace/air handler is a Goodman® or Amana® brand unit, that furnace/air handler must have been registered online within 60 days of installation of the furnace/air handler. Failure by Quebec or California residents to have registered a Goodman® or Amana® brand furnace/air handler does not diminish their warranty rights.

Product Features

- Large 12" square touch-screen display with extra-large touch keys
- Intuitive menu-driven set-up, programming, & operation: with beeping prompt to confirm touch screen entries
- Seven-day programmable or non-programmable options
- Four steps per daily schedule sequence
- Indefinite set-point hold or 4-hour temporary temperature over-ride
- Dehumidification controls
- Remote outdoor temperature sensor
- Hard-wired with battery back-up
- Clean, uncluttered touch-screen provides easier navigation
- Selectable energy management recovery program
- Exclusive "Call for Service" diagnostic indicator
- Active system diagnostics
- Dual-fuel heat pump compatible
- Permanent program retention during power loss
- Auto heat/cool changeover option: automatically switches between heating and cooling programs
- Maintains room temperature to within +/-1°
- Room temperature display: can be recalibrated up to +/- 4°

ComfortNet Family of Products

- Air Conditioners: DSXC18, DSXC16
- Heat Pumps: DSZC18, DSZC16
- Gas Furnaces: GMVC95, GCVC9, GMVC8
- Air Handlers: AVPTC, MBVC



TOUCH-SCREEN THERMOSTATS — FOR RESIDENTIAL AND LIGHT COMMERCIAL APPLICATIONS

The Goodman® brand programmable and non-programmable Touch-Screen Digital Thermostats are compatible with a variety of accessories and are the finishing touch to high-quality HVAC systems.

Product Features

- Intuitive menu-driven set-up, programming, & operation: with beeping prompt to confirm touch screen entries
- Permanent program retention during power loss
- Indefinite set-point hold or 4-hour temporary temperature over-ride
- Temporary temperature override: can be set from 15 minutes for temporary adjustments up to 7 days for vacation over-ride
- Auto heat/cool changeover option: automatically switches between heating and cooling programs
- Heating & cooling, heating only, or cooling only configuration (installer selectable)
- Set-point temperature “limited range” capable
- Enhanced (variable) touch-screen security: prevents tampering
- Furnace filter change reminder
- Maintains room temperature to within +/-1°
- Room temperature display: can be recalibrated up to +/- 4°



* Complete warranty details available from you local dealer or at www.goodmanmfg.com.

Image	Model	Application	Change-Over	Programmable	Stages	Display	Indicators	Power Source
	TSTAT GTS1175	Gas Heat Electric Heat Electric Cool	Auto	7 day, 5/1/1 day or Non-Programmable	1 Heat/1 Cool	Back-lit Digital	Furnace Filter	Hard-wired w/Battery Back-up or Battery-Powered
	TSTAT GTS3275	Gas Heat Electric Heat Electric Cool	Auto	7 day, 5/1/1 day or Non-Programmable	3 Heat/2 Cool	Back-lit Digital	Furnace Filter	Hard-wired w/Battery Back-up or Battery-Powered
	TSTAT GTS4275	Gas Heat Electric Heat Electric Cool	Auto	7 day, 5/1/1 day or Non-Programmable	4 Heat/2 Cool	Back-lit Digital	Furnace Filter UV Lamp Humidifier Pad	Hard-wired w/Battery Back-up or Battery-Powered

Goodman Manufacturing Company, L.P., reserves the right to discontinue, or change at any time, specifications or designs without notice or without incurring obligations.

STANDARD THERMOSTATS & THERMOSTAT ACCESSORIES



* Complete warranty details available from you local dealer or at www.goodmanmfg.com.

IMAGE	MODEL	APPLICATION	CHANGE-OVER	PROGRAM-MABLE	STAGES	DISPLAY	READ-OUT	INDICATOR	POWER SOURCE
	TSTAT G2111	Gas Furnaces A/C, Heat Pumps Packaged Units	Auto/Manual	1-day + 4 time periods	2 Heat/1 Cool	Back-lit Digital	Fahrenheit or Celsius	Service Filter & UV lights	Hard-wired
	TSTAT G3272	Gas Furnaces A/C, Heat Pumps Packaged Units	Auto/Manual	7-day	3 Heat/2 Cool	Back-lit Digital	Fahrenheit or Celsius	Outdoor Temps/ Service Filter & UV	Hard-wired
	TSTAT G3273	Gas Furnaces A/C, Heat Pumps Dual-Fuel Packaged Units Humidification	Auto/Manual	7-day	3 Heat/2 Cool	Back-lit Digital	Fahrenheit or Celsius	Outdoor Temps/ Service Filter & UV	Hard-wired
	TSTAT G1100	Gas Furnaces A/C, Heat Pumps Packaged A/C	Manual	No	1 Heat/1 Cool	Digital	Fahrenheit or Celsius	N/A	Hard-wired w/Battery Back-up
	TSTAT G2100	Heat Pump w/Aux. Heat	Manual	No	2 Heat/1 Cool	Digital	Fahrenheit or Celsius	Aux. Heat	Hard-wired w/Battery Back-up
	TSTAT G1152	Gas Furnaces A/C, Heat Pumps Packaged A/C	Manual	5-day + 2-day	1 Heat/1 Cool	Back-lit Digital	Fahrenheit or Celsius	Service Filter	Hard-wired w/Battery Back-up
	TSTAT G2152	Heat Pump w/Aux. Heat	Manual	5-day + 2-day	2 Heat/1 Cool	Back-lit Digital	Fahrenheit or Celsius	Aux. Heat/ Service Filter	Hard-wired or Battery-powered

ACCESSORY	ITEM #	FEATURES	THERMOSTATS
	GAC0400	<ul style="list-style-type: none"> Allows the outdoor air temperature to be sent to the thermostat 	TSTATG2111 TSTATG3272 TSTATG3273
	GAC0401	<ul style="list-style-type: none"> Indoor sensor with over-ride button allows user to change to Occupied mode for after-hours heating or cooling 	TSTATG3272 TSTATG3273
	GAC0410	<ul style="list-style-type: none"> Where additional wiring cannot be run, this accessory can be used to add a wire to the thermostat 	All Models
	GAC0414REC	<ul style="list-style-type: none"> Automatically averages the temperatures it receives from the indoor wireless sensor and reports the average to the thermostat 	TSTATG3272 TSTATG3273
	GAC0414RF	<ul style="list-style-type: none"> Wireless Remote Room Sensor monitors indoor or outdoor temperature (0°F - 127°F) 	TSTATG3272 TSTATG3273

ACCESSORY	ITEM #	FEATURES	THERMOSTATS
	GAC0423	<ul style="list-style-type: none"> Slim attractive wall plate that makes replacing old thermostats easy 	TSTATG1100 TSTATG1152 TSTATG2100 TSTATG2152
	GAC0431	<ul style="list-style-type: none"> Allows for the infrared remote operation of the most basic thermostat functions 	TSTATG2111 TSTATG3272 TSTATG3273
	GAC0432	<ul style="list-style-type: none"> Installer can copy & transfer stored data from one thermostat to another User can transfer configuration setting from one thermostat to another 	TSTATG2111 TSTATG3272 TSTATG3273
	GAC0433	<ul style="list-style-type: none"> Remote access for simple thermostat control Wireless connectivity Quick & easy installation 	TSTATG2111 TSTATG3272 TSTATG3273

Goodman Manufacturing Company, L.P., reserves the right to discontinue, or change at any time, specifications or designs without notice or without incurring obligations.

AMGFLEX® DUCT



Product Features

- Contains the Johns Manville Formaldehyde-Free™ fiberglass insulation
- Inner core coated with Agion® anti-microbial
- Greenguard Certified technology that resists mold and fungus growth
- Oversized core to fit on collars and register boxes
- Galvanized metal core reinforcing
- Weather-resistant packaging
- Available in R-6.0, and R-8.0

SERIES	R-VALUE	DIAMETER													
		3"	4"	5"	6"	7"	8"	9"	10"	12"	14"	16"	18"	20"	22"
86	6.0	X	X	X	X	X	X	X	X	X	X	X	X	X	X
88	8.0	X	X	X	X	X	X	X	X	X	X	X	X	X	

HPDFLEX™ COMMERCIAL DUCT

Product Features

- -2" W.C. negative and +16" W.C. positive static pressure (diameters available: 4"-10", 12", 14", 16)
- Inner core coated with Agion® anti-microbial
- Johns Manville Formaldehyde-Free™ fiber glass insulation — Using Formaldehyde-Free insulation helps meet the US EPA recommendation to minimize exposure to formaldehyde and California EPA's recommendation to use insulation with no added formaldehyde.
- Available in R-4.2, R-6.0 and R-8.0
- Galvanized metal core reinforcing
- Weather-resistant bag packaging
- Easy-to-carry package
- Oversized core to fit on collars and register boxes



“RIP-STOP” SILVER JACKET



Product Features

- Contains Johns Manville Formaldehyde-Free™ fiberglass insulation
- Oversized core to fit on collars and register boxes
- Galvanized, metal core reinforcing
- Available in 12½', 25', and 50' lengths for R-4.2, R-6.0, and R-8.0
- Weather-resistant packaging
- Available in boxes and bags
- Meets the following standards:
 - ◇ UL Standard 181
 - ◇ ETL Listed
 - ◇ HUD/FHA standards 515.2.1 Paragraph B
 - ◇ NFPA standards 90A and 90B

SERIES	R-VALUE	DIAMETER													
		3"	4"	5"	6"	7"	8"	9"	10"	12"	14"	16"	18"	20"	22"
40	4.2		X	X	X	X	X	X	X	X	X	X	X	X	X
80	6.0	X	X	X	X	X	X	X	X	X	X	X	X	X	X
85	8.0	X	X	X	X	X	X	X	X	X	X	X	X	X	

UV-INHIBITED BLACK JACKET



Product Features

- Contains Johns Manville Formaldehyde-Free™ fiberglass insulation
- Oversized core to fit on collars and register boxes
- Galvanized metal core reinforcing
- Available in 12½', 25', and 50' lengths for R-4.2, R-6.0, and R-8.0
- Weather-resistant packaging
- Easy-to-carry package: up to 10" sizes strapped together as pairs
- Available in boxes and bags
- Meets the following standards:
 - ◇ UL Standard 181
 - ◇ ETL Listed
 - ◇ HUD/FHA standards 515.2.1 Paragraph B
 - ◇ NFPA standards 90A and 90B

SERIES	R-VALUE	DIAMETER											
		4"	5"	6"	7"	8"	9"	10"	12"	14"	16"	18"	20"
20	4.2	X	X	X	X	X	X	X	X	X	X	X	X
60	6.0	X	X	X	X	X	X	X	X	X	X	X	X
65	8.0	X	X	X	X	X	X	X	X	X	X	X	X

MOBILE HOME-APPROVED DUCT

Product Features

- Contains Johns Manville Formaldehyde-Free™ fiberglass insulation
- Extra heavy-duty, UV-inhibited, polyethylene vapor barrier
- Oversized core to fit on collars and register boxes
- Galvanized, metal core reinforcing
- Available in 25' lengths for R-4.2, R-6.0, and R-8.0
- Weather-resistant packaging
- Easy-to-carry package: up to 10" sizes strapped together as pairs
- Available in boxes and bags
- Meets the following standards:
 - ◇ UL Standard 181
 - ◇ ETL Listed
 - ◇ HUD/FHA standards 515.2.1 Paragraph B
 - ◇ NFPA standards 90A and 90B



SERIES	R-VALUE	DIAMETER						
		6"	8"	10"	12"	14"	16"	18"
51	4.2	X	X	X	X	X	X	X
71	6.0	X	X	X	X	X	X	X
81	8.0	X	X	X	X	X	X	X

COLLARED SILVER JACKET

Product Features

- Contains Johns Manville Formaldehyde-Free™ fiberglass insulation
- Metallic, polyester vapor barrier
- Special rip-stop scrim reinforcement
- Factory-attached universal male/female collars
- Comes in 6' and 7' lengths
- Packaged 2 pieces per box



R-VALUE	DIAMETER											
	4"	5"	6"	7"	8"	9"	10"	12"	14"	16"	18"	20"
4.2	X	X	X	X	X	X	X	X	X	X	X	X
6.0	X	X	X	X	X	X	X	X	X	X	X	X
8.0	X	X	X	X	X	X	X	X	X	X	X	X

INSULATED SLEEVE

Product Features

- Contains Johns Manville Formaldehyde-Free™ fiberglass insulation
- Ideal for insulating new or existing hard pipe
- Available in reinforced Metallic Polyester Vapor Barrier or in Polyethylene Vapor Barrier
- Available in R-4.2, R-6.0, and R-8.0
- Standard length: 5 feet
- One starter cap included in each box



SERIES	DIAMETER									
	4"	5"	6"	7"	8"	9"	10"	12"	14"	16"
SS	X	X	X	X	X	X	X	X	X	X
BS	X	X	X	X	X	X	X	X	X	X

METALLIC UNINSULATED AIR CONNECTOR

Product Features

- Oversized core to fit on collars and register boxes
- Temperature range is -20°F to 200°F intermittent
- Meets the following standards:
 - ◇ UL Standard 181
 - ◇ ETL Listed
 - ◇ HUD/FHA standards 515.2.1 Paragraph B
 - ◇ NFPA standards 90A and 90B



SERIES	DIAMETER												
	3"	4"	5"	6"	7"	8"	9"	10"	12"	14"	16"	18"	20"
06	X	X	X	X	X	X	X	X	X	X	X	X	X

CLOTHES DRYER TRANSITION DUCT



Product Features

- Easy to install
- Boxed universal flexible dryer duct
- Fire-resistant, heavy-duty four-ply aluminum foil laminate construction
- Available size: 4" diameter (actual: 4 1/8")
- Fits most commonly used electric and gas dryers
- Fits in tight places where rigid metal ducting will not work
- Close wire frame spacing allows tight bends without collapsing
- Meets all UL 2158A requirements:
 - ◇ Proven corrosion-resistant construction
 - ◇ Flame spread per UL 723 testing of less than 25
 - ◇ Complies with stringent fire-resistance testing
 - ◇ Stands up to repeated bending and twisting
 - ◇ Resists puncturing
 - ◇ Strong in tension

ACOUSTIC BAFFLES AND BANNERS

Quietflex® brand Acoustic Baffles and Banners are effective and economical solutions for noise control problems, providing excellent sound absorption. They absorb reflected noise off ceilings, walls, and floors and can be suspended from either ceilings or walls.



Product Features

- Great Sound Absorption
- Economical
- Lightweight
- Class A Flammability Rating per ASTM E 84
- Size can be made to custom specifications

Sound Absorption

Absorption (Sabins/Baffle)

(ASTM C 423-02a, Type A and H Mounting)

	½ OCTAVE BAND CENTER FREQUENCIES (Hz)						
	125	250	500	1000	2000	4000	5000
Type A Mounting	4.8	5.6	8.9	7.8	5.8	4.4	4.6
Type H Mounting	6.2	6.9	11.2	15.5	11.8	9.9	9.1

NRC Values, Absorption Coefficients (Sabins/ft²)

(ASTM C 423-02a, Type A and H Mounting)

	½ OCTAVE BAND CENTER FREQUENCIES (Hz)						
	125	250	500	1000	2000	4000	NRC
Type A Mounting	0.60	0.70	1.11	0.98	0.72	0.55	0.90
Type H Mounting	0.39	0.43	0.70	0.97	0.74	0.62	0.70

Reverberation Time Reductions (seconds)

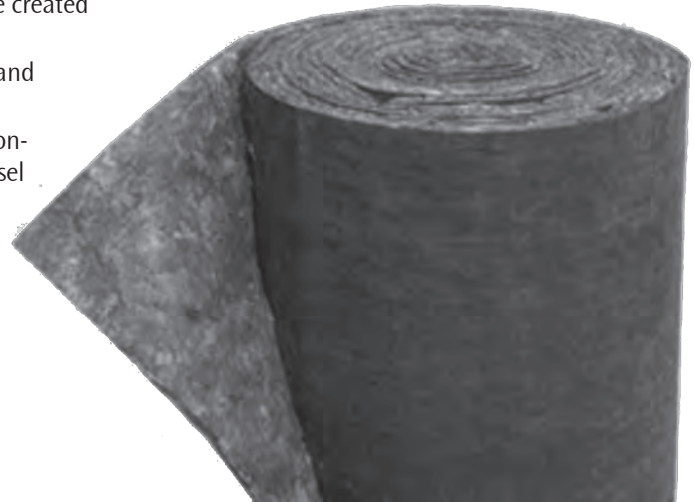
	FREQUENCIES (Hz)						
	125	250	500	1000	2000	4000	5000
Reverberation Time Reduction Type A (seconds)	0.6	1.6	2.9	1.9	1.0	0.4	0.2
Reverberation Time Reduction Type H (seconds)	0.4	1.1	2.1	1.9	1.1	0.4	0.2

TEXTILE DUCT LINER

Quietflex® brand Textile Duct Liner is a black mat-faced and edge-coated liner using continuous textile-type glass fibers bonded with thermal setting resin. The facing is applied during the manufacturing process to ensure a tough and durable bond between the base blanket and the facing. The Duct Liner enhances environmental quality by absorbing unwanted noise within the sheet metal duct and increases indoor comfort by decreasing heat loss or gain through the duct walls.

Product Features

- Acoustical Absorption – Helps reduce unwanted noise created by the air ventilation system
- Low Thermal Conductivity – Creates a more efficient and comfortable indoor environment
- Easy to Fabricate and Install – Designed to make the contractor's installation quick and easy through higher tinsel strengths and larger fibers so that the product can adhere to the walls of the duct more consistently
- Resistant to Bacterial and Fungal Growth – Coated with a mold and antibacterial spray to help prevent microbial growth in accordance with ASTM C 1071
- Easy to clean and maintain

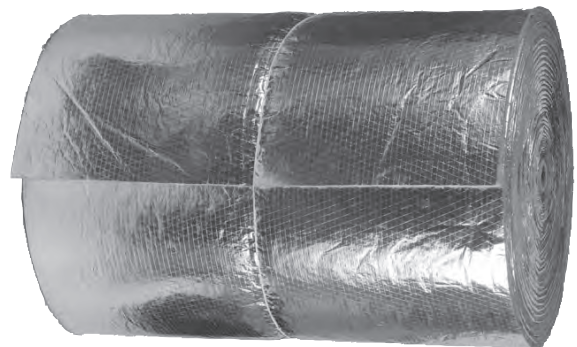


DUCT WRAP

Quietflex® Brand Duct Wrap is a foil faced fiberglass bonded with thermosetting resin. FSK facing is applied during the manufacturing process to insure a strong, long lasting bond between the base blanket and the facing. Quietflex® Brand Duct Wrap is an external insulation for sheet metal ducts in HVAC systems. It enhances environmental quality by absorbing unwanted noise within the duct, increasing indoor comfort and energy efficiency by decreasing heat loss or gain through the duct walls. All facings are supplied with a single 2 inch (51mm) stapling tab.

Product Features

- Available in R-4.2, R-6.0 and R-8.0
- Acoustical Absorption – Helps reduce unwanted noise created within the duct
- Creates a more efficient and comfortable indoor environment



SPLIT SYSTEMS

Air Conditioners

MODEL	DESCRIPTION
ABK-20	Anchor Bracket Kit
ASC-01A	Anti-Short Cycle Kit
CSR-U-1/2/3	Hard-Start Kits
FSK-01A	Freeze Protection Kit (Indoor Coil)
LAC-03A	Low Ambient Control; can only be used with TXV-equipped indoor coil
LSK-01A	Liquid Line Solenoid
OT18-60A	Outdoor Thermostat
PCK-01A ¹	Pressure Control Kit; high-pressure switch and time-delay relay
TX2N2/TX3N2/TX5N2	Non-bleed TXV Kits – R-22
TX2N4/TX3N4/TX5N4	Non-bleed TXV Kits – R-410A

¹ For use with Goodman® brand R-22 Split System Air Conditioners

Heat Pumps

MODEL	DESCRIPTION
ABK-20	Anchor Bracket Kit
AFE18-60A ²	Fossil Fuel Kit
ASC-01A	Anti-Short Cycle Kit
CSR-U-1/2/3	Hard-Start Kits
EH18-60	Emergency Heat Relay Kit
FSK-01A	Freeze Protection Kit (Indoor Coil)
HPSK-01	Heat Pump Shut-off Relay; for ACNF Air Handlers
LAC-03A	Low Ambient Control; can only be used with TXV-equipped indoor coil
OT18-60A	Outdoor Thermostat Kit with Lockout Stat
OT/EHR18-60	Emergency Heat Relay Kit
TX2N2/TX3N2/TX5N2	Non-bleed TXV Kits – R-22
TX2N4/TX3N4/TX5N4	Non-bleed TXV Kits – R-410A

² Required for use with a dual-fuel split system heat pump system

EXPANSION VALVE KIT MATCH-UPS

MODEL	DESCRIPTION	APPLICABLE UNITS
TX2N2	Expansion Valve Kit, Non-bleed: Field-installed for 1½- to 2-ton R-22 air conditioners & heat pumps	Air Handlers: ADPF, AEPF, ARPF, ARUF Coils: CAUF, CAPF, CHPF, CSCF
TX2N4	Expansion Valve Kit, Non-bleed: Field-installed for 1½- to 2-ton R-410A air conditioners & heat pumps	
TX3N2	Expansion Valve Kit, Non-bleed: Field-installed for 2- to 3-ton R-22 air conditioners & heat pumps	
TX3N4	Expansion Valve Kit, Non-bleed: Field-installed for 2- to 3-ton R-410A air conditioners & heat pumps	
TX5N2	Expansion Valve Kit, Non-bleed: Field-installed for 3½- through 5-ton R-22 air conditioners & heat pumps	
TX5N4	Expansion Valve Kit, Non-bleed: Field-installed for 3½ through 5-ton R-410A air conditioners & heat pumps	

GAS FURNACES

Model	Description	Used with These Models Where Required
017K000005	Flush-mount Vent Kit	All 90% Gas Furnaces
AFE18-60A	Fossil Fuel Kit	Goodman 80% Variable-Speed/Multi-Speed Gas Furnaces
CFB17	Downflow Floor Base	Goodman 90% 17" wide Downflow Gas Furnaces
CFB21	Downflow Floor Base	Goodman 90% 21" wide Variable-Speed Gas Furnaces
CFB24	Downflow Floor Base	Goodman 90% 24" wide Variable-Speed Gas Furnaces
SBT14	Downflow Sub-base	Goodman 80% 14" wide Multi-Speed Gas Furnaces
SBT17	Downflow Sub-base	Goodman 80% 17½" wide Multi-Speed Gas Furnaces
SBT21	Downflow Sub-base	Goodman 80% 21" wide Multi-Speed Gas Furnaces
DCVK-20	Alternate Concentric Vent Kit (2")	Goodman 90% Variable-Speed Gas Furnaces
DCVK-30	Alternate Concentric Vent Kit (3")	Goodman 90% Variable-Speed Gas Furnaces
DEHUM1	Dehumidistat	Goodman 90% Variable-Speed Gas Furnaces
EFR01	External Filter Rack	Goodman 90% Variable-Speed Gas Furnaces
FTK03A	Twinning Kit	Goodman Multi-Speed Gas Furnaces
FSRKG-14/17/21/24	Noise Reduction Kits	Goodman 80% Gas Furnaces
HA02	High Altitude Natural Gas Kit	Goodman 80% Multi-Speed Gas Furnaces
HALP10	High Altitude LP Gas Kit	Goodman 90% Multi-Speed Gas Furnaces
HANG11	High Altitude Natural Gas Kit	Goodman 90% Multi-Speed Gas Furnaces
HANG12	High Altitude Natural Gas Kit	Goodman 90% Multi-Speed Gas Furnaces
HAPS27	High Altitude Pressure Switch Kit	Goodman 90% Multi-Speed Gas Furnaces
LPLP01	Low LP Gas Pressure Switch	Goodman Gas Furnaces (converted to LP gas use)
LPT-03	LP Conversion Kit	Goodman Single-Stage Gas Furnaces
LPM-06	LP Conversion Kit	Goodman Two-Stage Gas Furnaces

PACKAGED UNITS

GPC13/14H AC Units & GPH13/14H Heat Pump Units

Item	Description
OT18-60A	Outdoor Thermostat Kit with Lockout Stat
OT/EHR18-60	Emergency Heat Relay kit
PCCP101-103	Roof Curb
PCE101-103	Downflow Economizer for use with PCP101-103
PCEF101-103	Elbow & Flashing with R-8 Liner
PCFR101-103	External Horizontal Filter Rack
PCMDH101-103	Manual Damper
PCMDM101-103	Motorized Damper for use with PCP101-103
PCP101-103	Downflow Plenum Kit
PCP101-103R8	Downflow Plenum Kit for Units with R-8 Insulation
SQRPC101	Square-to-Round Adapter for use with PCCP101-103 Curb 16" Rounds
SQRPC102-103	Square-to-Round Adapter for use with PCCP101-103 Curb 18" Rounds
SQRPCH101	Square-to-Round Adapters for Medium Chassis — 16" & 14"
SQRPCH102-103	Square-to-Round Adapters for Large Chassis — 18" & 14"

GPC13/14M AC Units & GPH13/15M Heat Pump Units

Item	Description
20464501PDGK	Horizontal Duct Cover for Medium Chassis
20464502PDGK	Horizontal Duct Cover for Large Chassis
GPH13MED102/103	Downflow Economizer for Medium/Large Chassis
GPH13MFR102/103	Internal filter rack for Downflow Applications
OT/EHR18-60	Emergency Heat Relay kit
OT18-60A	Outdoor Thermostat Kit with Lockout Stat
PGC102/103	Roof Curb for Medium/Large Chassis
PGMDD102	Manual Damper for Downflow Application — Medium Chassis
PGMDD103	Manual Damper for Downflow Application — Large Chassis
PGMDH102	Manual 25% Fresh Air Damper for Horizontal Applications — Medium Chassis
PGMDH103	Manual 25% Fresh Air Damper for Horizontal Applications — Large Chassis
PGMDMD102	Motorized Damper for Downflow Application — Medium Chassis
PGMDMD103	Motorized Damper for Downflow Application — Large Chassis
PGMDMH102	Motorized 25% Fresh Air Damper for Horizontal Applications — Medium Chassis
PGMDMH103	Motorized 25% Fresh Air Damper for Horizontal Applications — Large Chassis
SQRPG102	Square-to-Round Adapter with 16" Round for Downflow Applications — Medium Chassis
SQRPG103	Square-to-Round Adapter with 18" Round for Downflow Applications — Large Chassis
SQRPGH101/102	Square-to-Round Adapters for Medium Chassis — 16" & 14"
SQRPGH103	Square-to-Round Adapters for Large Chassis — 18" & 14"

PACKAGED UNITS (CONT.)

GPG13M/GPG15 Gas/Electric Units

Item	Description
CDK1-2/CDK3	Concentric Converter for Small & Medium & Large Chassis
20464501PDGK/20464502PDGK	Horizontal Duct Cover for Medium & Large Chassis
LPT-00A	L.P. Conversion Kit for GPG13M
LPM-05	L.P. Conversion Kit for GPG15
PGC101/102/103	Roof Curb for Small & Medium & Large Chassis
PGED101/102/103	Downflow Economizer for Small & Medium & Large Chassis
PGEH101/102/103	Horizontal Economizer for Small & Medium & Large Chassis
PGFR101/102/103	Filter Rack for Small & Medium & Large Chassis
PGMDD101/102/103	Downflow Manual Damper for Small & Medium & Large Chassis
PGMDMD101/102/103	Downflow Motorized Damper for Small & Medium & Large Chassis
PGMDH101/102/103	Horizontal Manual Damper for Small & Medium & Large Chassis
PGMDMH101/102/103	Horizontal Motorized Damper for Small & Medium & Large Chassis
SQRPG101/102/103	Downflow Square-to-Round for Small & Medium & Large Chassis –16" & 18"
SQRPGH101/102/103	Horizontal Square-to-Round for Small & Medium & Large Chassis –16" & 14" – 18" & 14"

AIR HANDLERS

Model	Description	Applicable Units
HKR-03	3 kW Electric Heat Kit w/out Circuit Protection	ADPF, AEPF, ARPF, ARUF Air Handlers and MBVC/MBR Blowers
HKR-05	5 kW Electric Heat Kit w/out Circuit Protection	
HKR-05C	5 kW Electric Heat Kit with Circuit Protection	
HKR-06	6 kW Electric Heat Kit w/out Circuit Protection	
HKR-08	8 kW Electric Heat Kit w/out Circuit Protection	
HKR-08C	8 kW Electric Heat Kit with Circuit Protection	
HKR-10	10 kW Electric Heat Kit w/out Circuit Protection	
HKR-10C	10 kW Electric Heat Kit with Circuit Protection	
HKR-15C	15 kW Electric Heat Kit with Circuit Protection	
HKR3-15	Three-phase 15 kW Electric Heat Kit	
HKR-20C	20 kW Electric Heat Kit with Circuit Protection	
HKR3-20	Three-phase 20 kW Electric Heat Kit	
HKR-21C	21 kW Electric Heat Kit with Circuit Protection	
FIL 18-32	Small Chassis (15½")	
FIL 36-42	Medium Chassis (19½")	
FIL 48-61	Large Chassis (22")	